

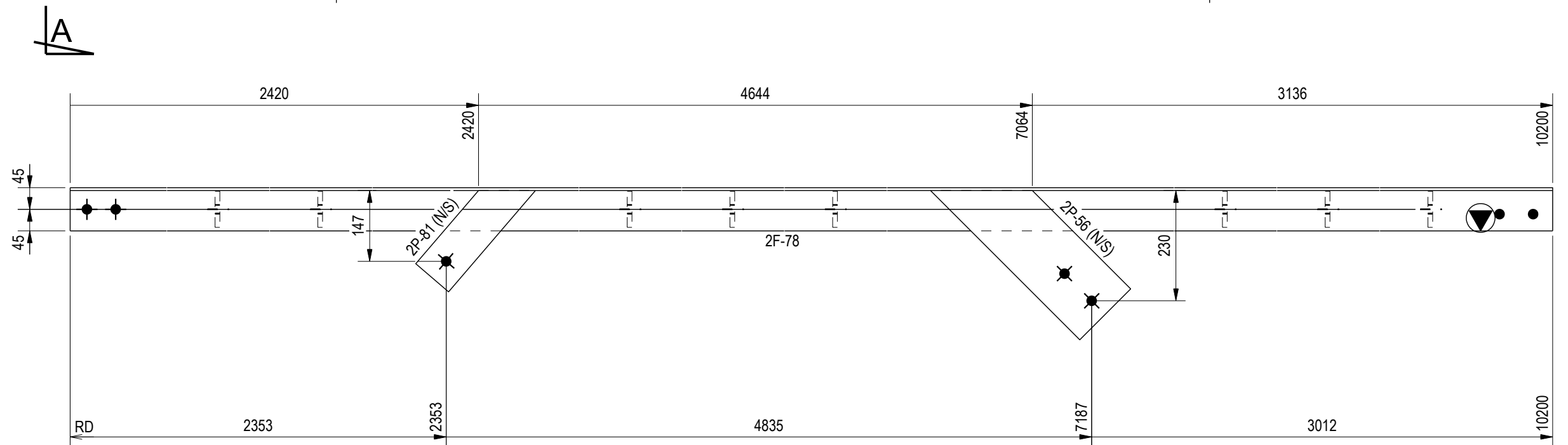
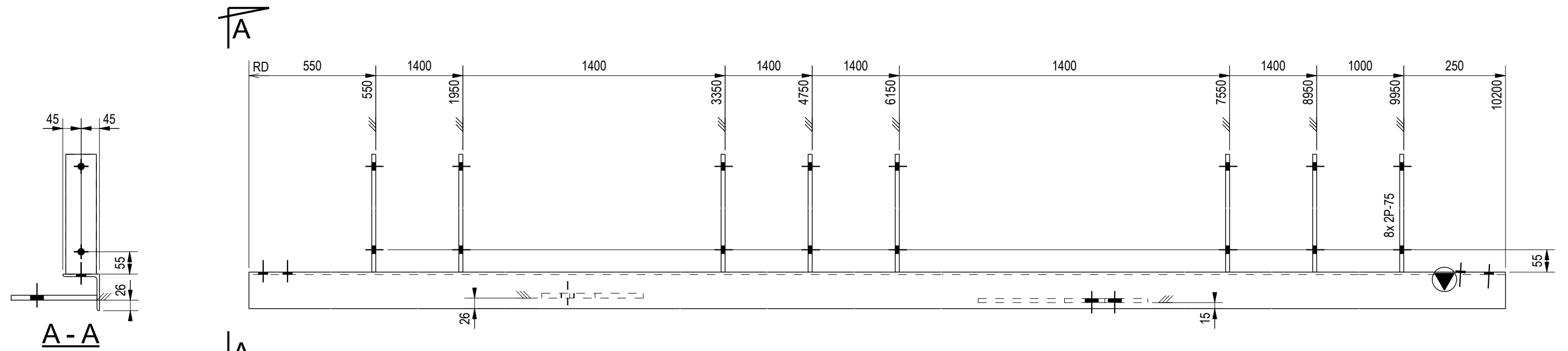
ASSEMBLY 2RA1-1 QTY - 1 OFF

MATERIAL LIST						
ITEM	No.OFF	SECTION	LENGTH	GRADE	WEIGHT(kg)	AREA(m ²)
2F-72	1	EA90*90*6	9102	300PLUS	75.0	3.2
2P-55	1	FLAT10*75	280	250	1.6	0.0
2P-64	2	FLAT12*90	327	250	4.6	0.1
2P-74	8	FLAT8*75	292	250	11.0	0.4
TOTAL					92.3	3.7

General Notes:

1. ALL WELDS ARE 6CFW U.N.O.
 2. FINISH - PRIMED U.N.O.
 3. CONTACT NIP DETAILING FOR ANY DISCREPANCIES
 4. DO NOT SCALE DRAWING
 5. CONTRACTOR TO VERIFY ALL LEVELS AND DIM'S PRIOR TO COMMENCEMENT WORK ON SITE OR ANY FABRICATION
- Orientation marks are placed according to the rules:
- ◐ - to the top flange of beams, at the end which points closest to the north or east
 - ◑ - to the lower end of columns, on the flange which points closest to the north or east
 - ◒ - to the flange of bracing, at the end which points closest to the north or east

REV	DATE	DESCRIPTION	
		CLIENT	
		PROJECT NAME	
P: (0040) 742 770 705		PROJECT No	ISSUE DATE
www.nip-detailing.com		DRAWN BY	23.07.2014
3rd angle projection		Eng. RADU GORAN	DRAWING No
		CHECKED BY	REV
		APPROVED BY	SCALE
SD 201			NTS



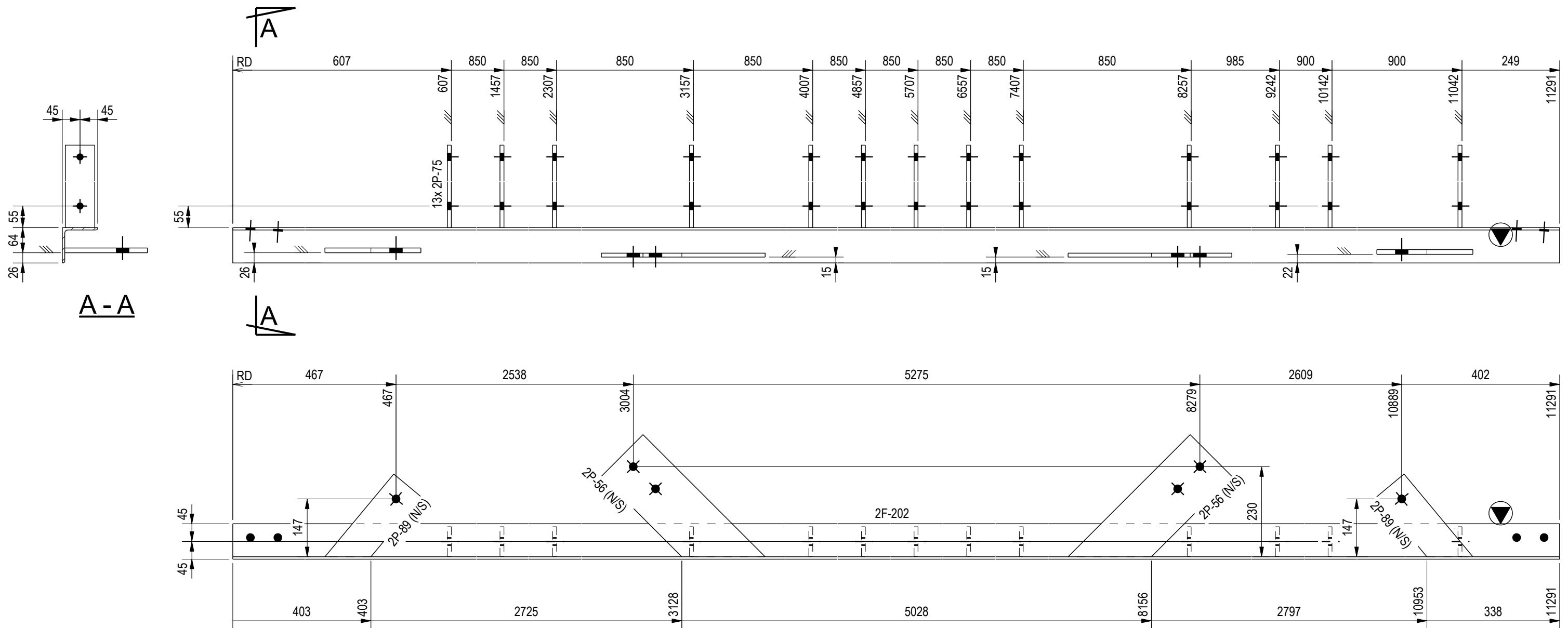
ASSEMBLY 2RA1-8 QTY - 1 OFF

MATERIAL LIST						
ITEM	No.OFF	SECTION	LENGTH	GRADE	WEIGHT(kg)	AREA(m ²)
2F-78	1	EA90°90°6	10200	300PLUS	84.1	3.6
2P-56	1	FLAT10°150	440	250	4.3	0.1
2P-75	8	FLAT10°75	295	250	13.9	0.4
2P-81	1	FLAT12°90	278	250	2.0	0.1
TOTAL					104.3	4.2

General Notes:

1. ALL WELDS ARE 6CFW U.N.O.
 2. FINISH - PRIMED U.N.O.
 3. CONTACT NIP DETAILING FOR ANY DISCREPANCIES
 4. DO NOT SCALE DRAWING
 5. CONTRACTOR TO VERIFY ALL LEVELS AND DIM'S PRIOR TO COMMENCEMENT WORK ON SITE OR ANY FABRICATION
- Orientation marks are placed according to the rules:
- ◐ -to the top flange of beams, at the end which points closest to the north or east
 - ◑ -to the lower end of columns, on the flange which points closest to the north or east
 - ◒ -to the flange of bracing, at the end which points closest to the north or east

REV	DATE	DESCRIPTION			
		CLIENT		PROJECT NAME	
		PROJECT No		ISSUE DATE	23.07.2014
		DRAWN BY	Eng. RADU GORAN	DRAWING No	REV
		CHECKED BY		SD 208	SCALE
		APPROVED BY			
 3rd angle projection					



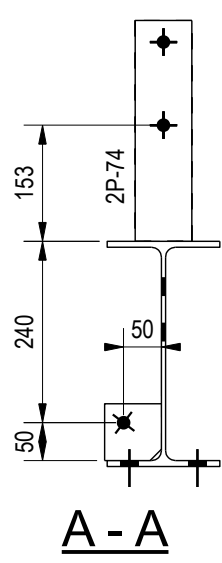
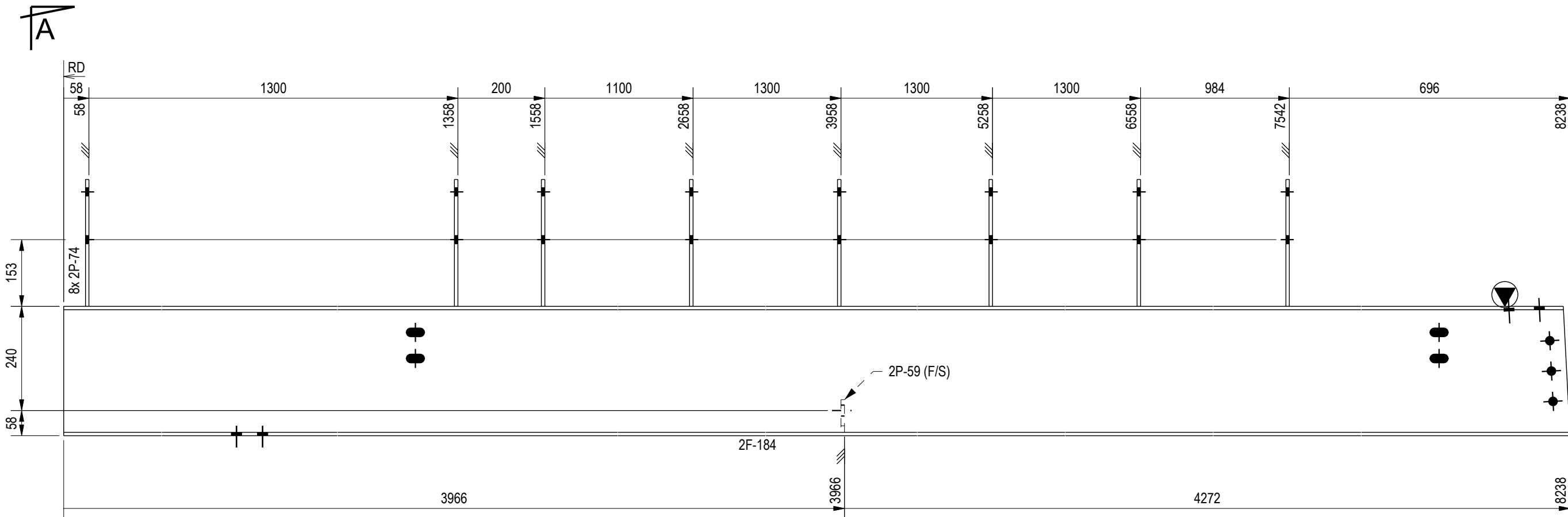
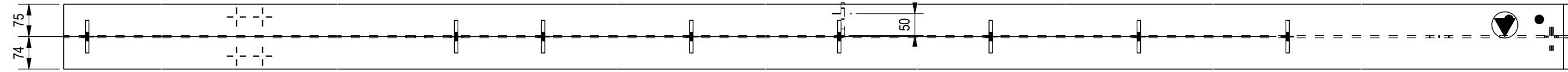
ASSEMBLY 2RA1-21 QTY - 2 OFF

MATERIAL LIST						
ITEM	No.OFF	SECTION	LENGTH	GRADE	WEIGHT(kg)	AREA(m ²)
2F-202	2	EA90*90*6	11291	300PLUS	186.1	7.9
2P-56	4	FLAT10*150	440	250	17.2	0.5
2P-75	26	FLAT10*75	295	250	45.2	1.3
2P-89	4	FLAT12*90	274	250	8.0	0.2
TOTAL					256.5	9.9

General Notes:

1. ALL WELDS ARE 6CFW U.N.O.
 2. FINISH - PRIMED U.N.O.
 3. CONTACT NIP DETAILING FOR ANY DISCREPANCIES
 4. DO NOT SCALE DRAWING
 5. CONTRACTOR TO VERIFY ALL LEVELS AND DIM'S PRIOR TO COMMENCEMENT WORK ON SITE OR ANY FABRICATION
- Orientation marks are placed according to the rules:
- ▲ - to the top flange of beams, at the end which points closest to the north or east
 - ▼ - to the lower end of columns, on the flange which points closest to the north or east
 - ◀ - to the flange of bracing, at the end which points closest to the north or east

REV	DATE	DESCRIPTION			
		CLIENT		PROJECT NAME	
		P: (0040) 742 770 705 www.nip-detailing.com		PROJECT No	ISSUE DATE
		DRAWN BY		Eng. RADU GORAN	DRAWING No
		CHECKED BY		SD 219	
APPROVED BY		REV	SCALE		



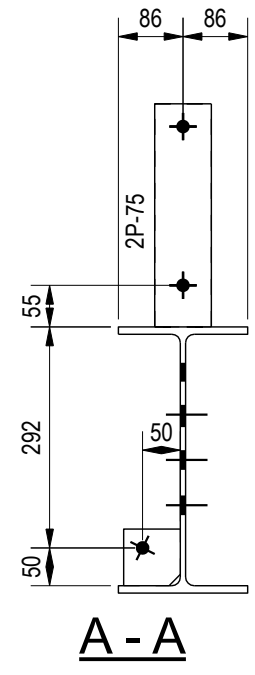
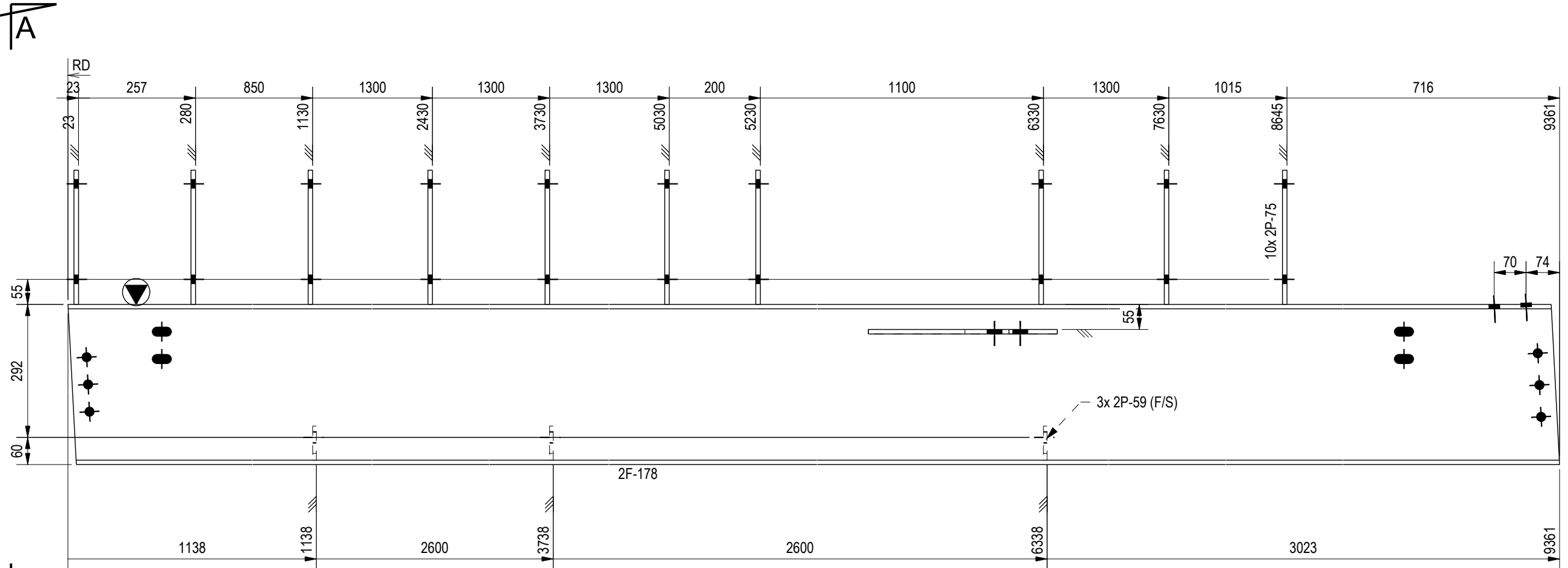
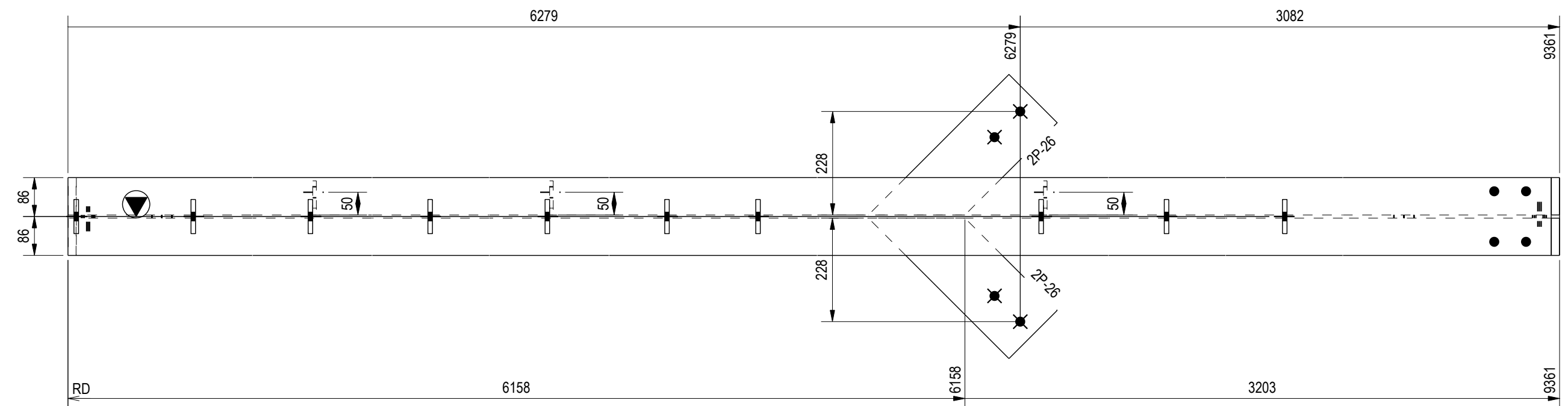
ASSEMBLY 2RB1-4 QTY - 3 OFF

MATERIAL LIST						
ITEM	No.OFF	SECTION	LENGTH	GRADE	WEIGHT(kg)	AREA(m ²)
2F-184	3	UB310*32	8238	300PLUS	791.6	28.7
2P-59	3	FLAT8*75	75	250	1.0	0.0
2P-74	24	FLAT8*75	292	250	33.0	1.2
TOTAL					825.6	29.9

General Notes:

1. ALL WELDS ARE 6CFW U.N.O.
 2. FINISH - PRIMED U.N.O.
 3. CONTACT NIP DETAILING FOR ANY DISCREPANCIES
 4. DO NOT SCALE DRAWING
 5. CONTRACTOR TO VERIFY ALL LEVELS AND DIM'S PRIOR TO COMMENCEMENT WORK ON SITE OR ANY FABRICATION
- Orientation marks are placed according to the rules:
- ⬇ - to the top flange of beams, at the end which points closest to the north or east
 - ⬆ - to the lower end of columns, on the flange which points closest to the north or east
 - ⬇ - to the flange of bracing, at the end which points closest to the north or east

REV	DATE	DESCRIPTION			
		CLIENT		PROJECT NAME	
P: (0040) 742 770 705		PROJECT No		ISSUE DATE	23.07.2014
www.nip-detailing.com		DRAWN BY	Eng. RADU GORAN	DRAWING No	REV SCALE
 3rd angle projection		CHECKED BY		SD 240	NTS
		APPROVED BY			



ASSEMBLY 2RB2-1 QTY - 1 OFF

MATERIAL LIST						
ITEM	No.OFF	SECTION	LENGTH	GRADE	WEIGHT(kg)	AREA(m ²)
2F-178	1	UB360*45	9361	300PLUS	420.3	12.6
2P-26	2	FLAT10*150	437	250	8.5	0.2
2P-59	3	FLAT8*75	75	250	1.0	0.0
2P-75	10	FLAT10*75	295	250	17.4	0.5
TOTAL					447.3	13.4

General Notes:

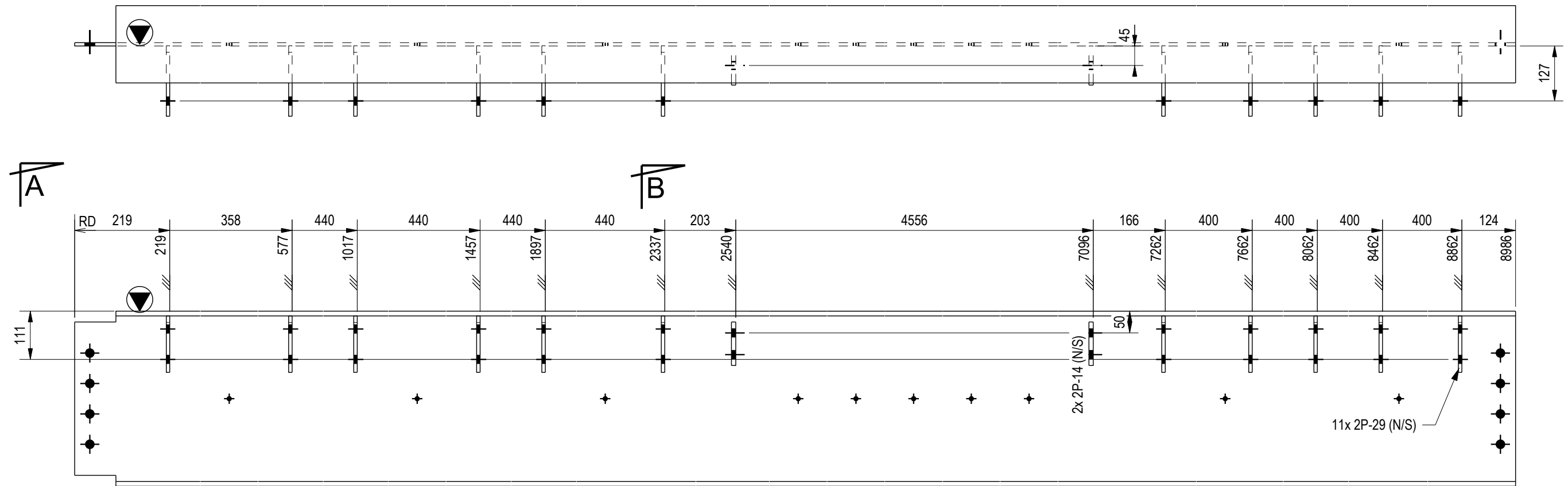
1. ALL WELDS ARE 6CFW U.N.O.
2. FINISH - PRIMED U.N.O.
3. CONTACT NIP DETAILING FOR ANY DISCREPANCIES
4. DO NOT SCALE DRAWING
5. CONTRACTOR TO VERIFY ALL LEVELS AND DIM'S PRIOR TO COMMENCEMENT WORK ON SITE OR ANY FABRICATION

Orientation marks are placed according to the rules:

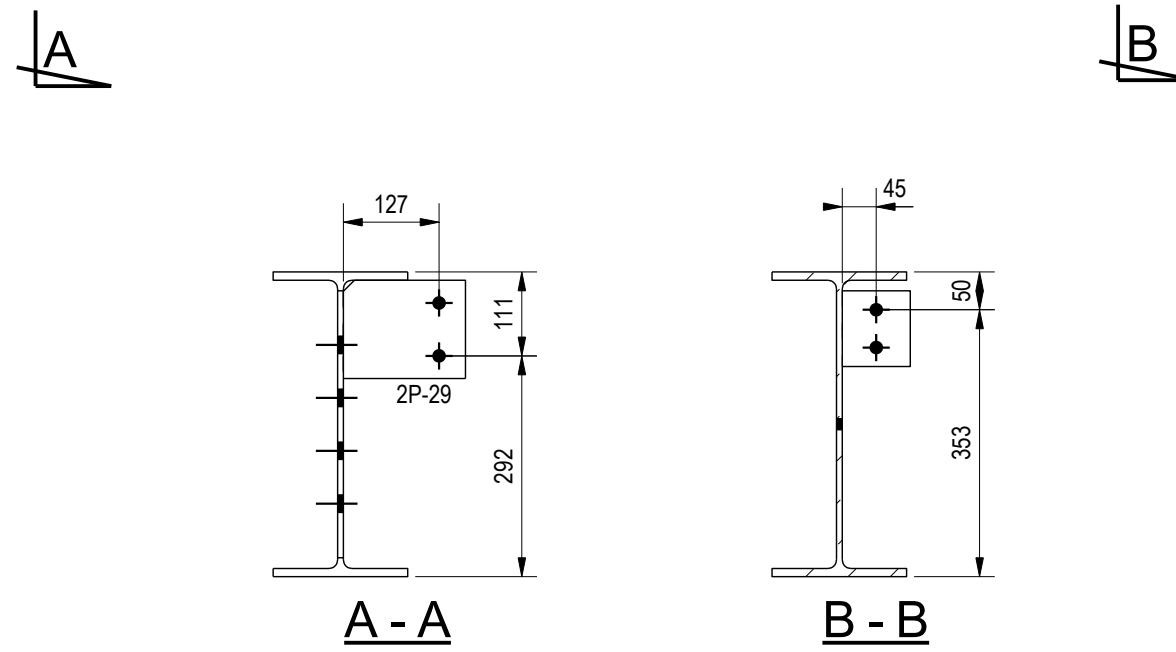
- ◐ - to the top flange of beams, at the end which points closest to the north or east
- ◑ - to the lower end of columns, on the flange which points closest to the north or east
- ◒ - to the flange of bracing, at the end which points closest to the north or east

REV	DATE	DESCRIPTION		PROJECT NAME	
		CLIENT			
		PROJECT No		ISSUE DATE	23.07.2014
		DRAWN BY	Eng. RADU GORAN	DRAWING No	REV
		CHECKED BY		SCALE	NTS
		APPROVED BY		SD 242	





2F-59



ASSEMBLY 2FB2-1 QTY - 2 OFF

MATERIAL LIST						
ITEM	No.OFF	SECTION	LENGTH	GRADE	WEIGHT(kg)	AREA(m ²)
2F-59	2	UB410*54	8986	300PLUS	972.1	26.6
2P-14	4	FLAT10*90	100	250	2.8	0.1
2P-29	22	FLAT8*130	162	250	29.0	1.0
TOTAL					1003.8	27.7

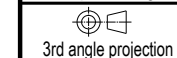
General Notes:

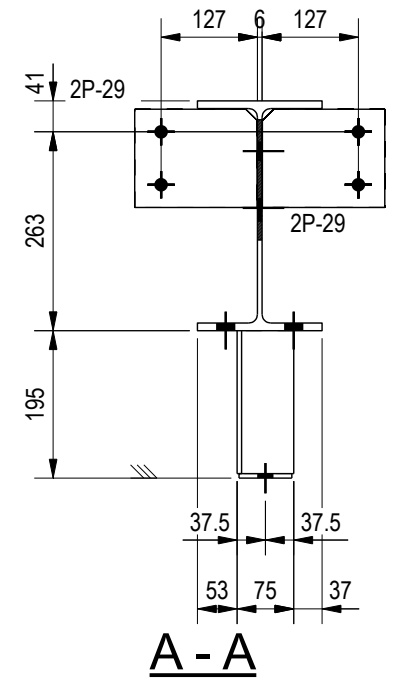
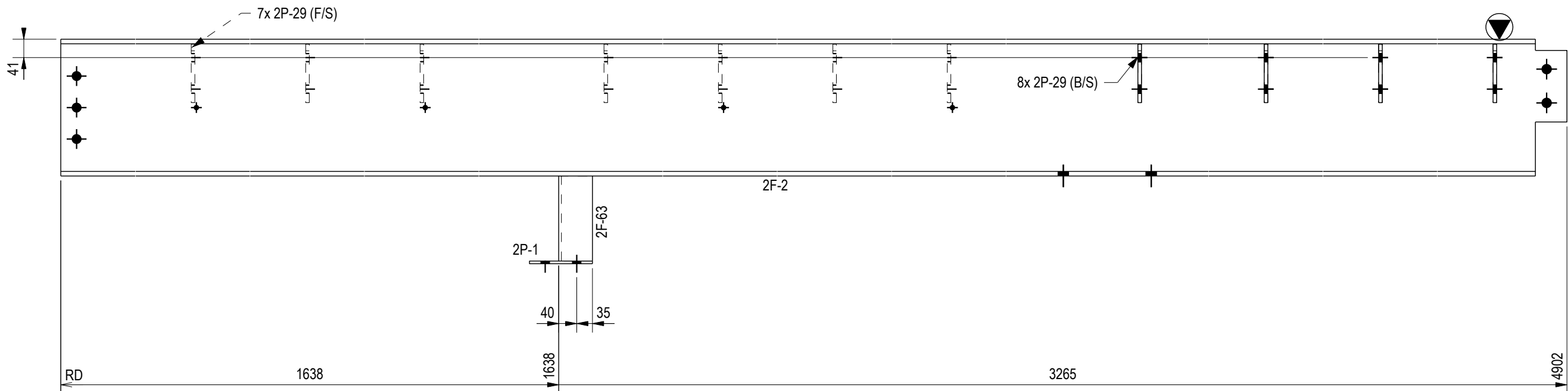
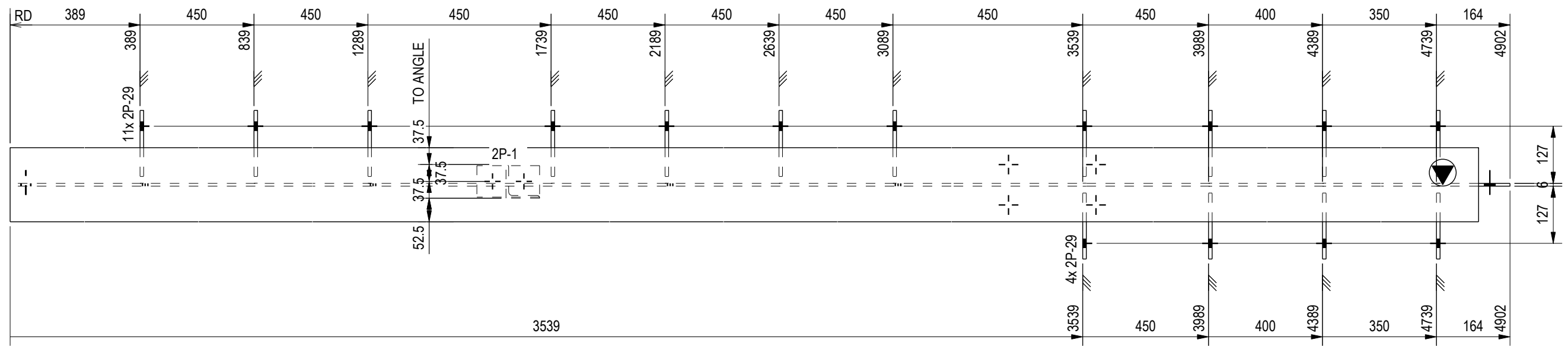
- ALL WELDS ARE 6CFW U.N.O.
 - FINISH - PRIMED U.N.O.
 - CONTACT NIP DETAILING FOR ANY DISCREPANCIES
 - DO NOT SCALE DRAWING
 - CONTRACTOR TO VERIFY ALL LEVELS AND DIM'S PRIOR TO COMMENCEMENT WORK ON SITE OR ANY FABRICATION
- Orientation marks are placed according to the rules:
- to the top flange of beams, at the end which points closest to the north or east
 - to the lower end of columns, on the flange which points closest to the north or east
 - to the flange of bracing, at the end which points closest to the north or east

REV	DATE	DESCRIPTION			
		CLIENT		PROJECT NAME	
		PROJECT No		ISSUE DATE	23.07.2014
		DRAWN BY	Eng. RADU GORAN	DRAWING No	REV SCALE
		CHECKED BY		SD 247	NTS
		APPROVED BY			



P: (0040) 742 770 705
www.nip-detailing.com





ASSEMBLY 2FB11-1 QTY - 1 OFF

MATERIAL LIST						
ITEM	No.OFF	SECTION	LENGTH	GRADE	WEIGHT(kg)	AREA(m ²)
2F-2	1	UB310*40	4902	300PLUS	200.5	6.1
2F-63	1	EA75*75*6	189	300PLUS	1.3	0.1
2P-1	1	PLATE6*70	140	250	0.5	0.0
2P-29	15	FLAT8*130	162	250	19.7	0.7
TOTAL					222.0	6.9

General Notes:

1. ALL WELDS ARE 6CFW U.N.O.
2. FINISH - PRIMED U.N.O.
3. CONTACT NIP DETAILING FOR ANY DISCREPANCIES
4. DO NOT SCALE DRAWING
5. CONTRACTOR TO VERIFY ALL LEVELS AND DIM'S PRIOR TO COMMENCEMENT WORK ON SITE OR ANY FABRICATION

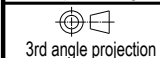
Orientation marks are placed according to the rules:

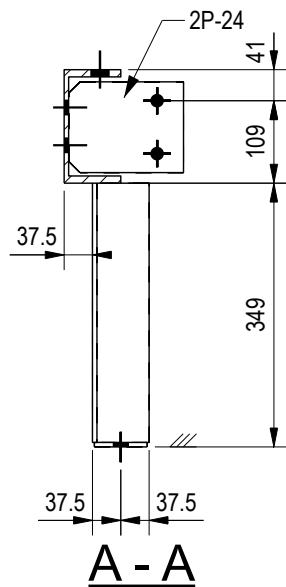
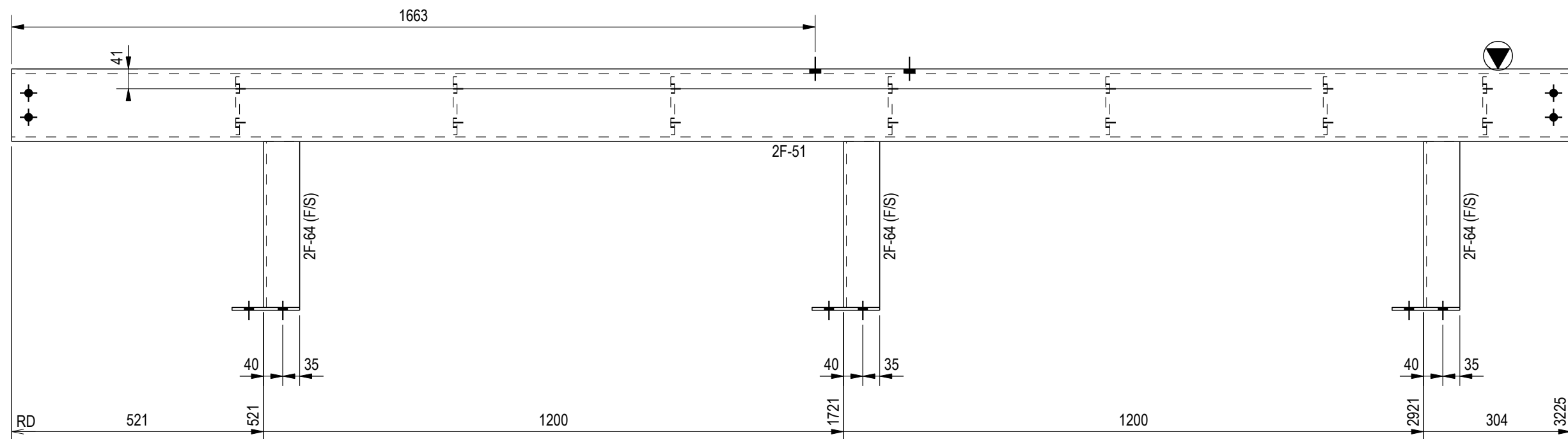
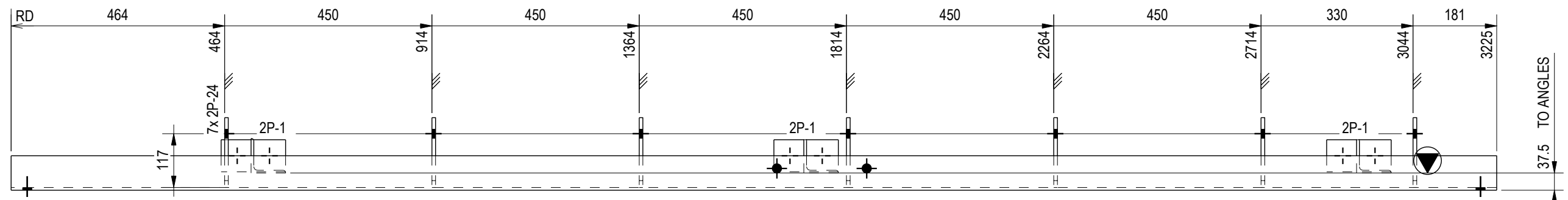
- ◐ - to the top flange of beams, at the end which points closest to the north or east
- ◑ - to the lower end of columns, on the flange which points closest to the north or east
- ◒ - to the flange of bracing, at the end which points closest to the north or east

REV	DATE	DESCRIPTION			
		CLIENT		PROJECT NAME	
		PROJECT No		ISSUE DATE	18.07.2014
		DRAWN BY	Eng. RADU GORAN	DRAWING No	REV
		CHECKED BY		SCALE	NTS
		APPROVED BY		SD 257	



P: (0040) 742 770 705
www.nip-detailing.com





ASSEMBLY 2FB21-1 QTY - 3 OFF

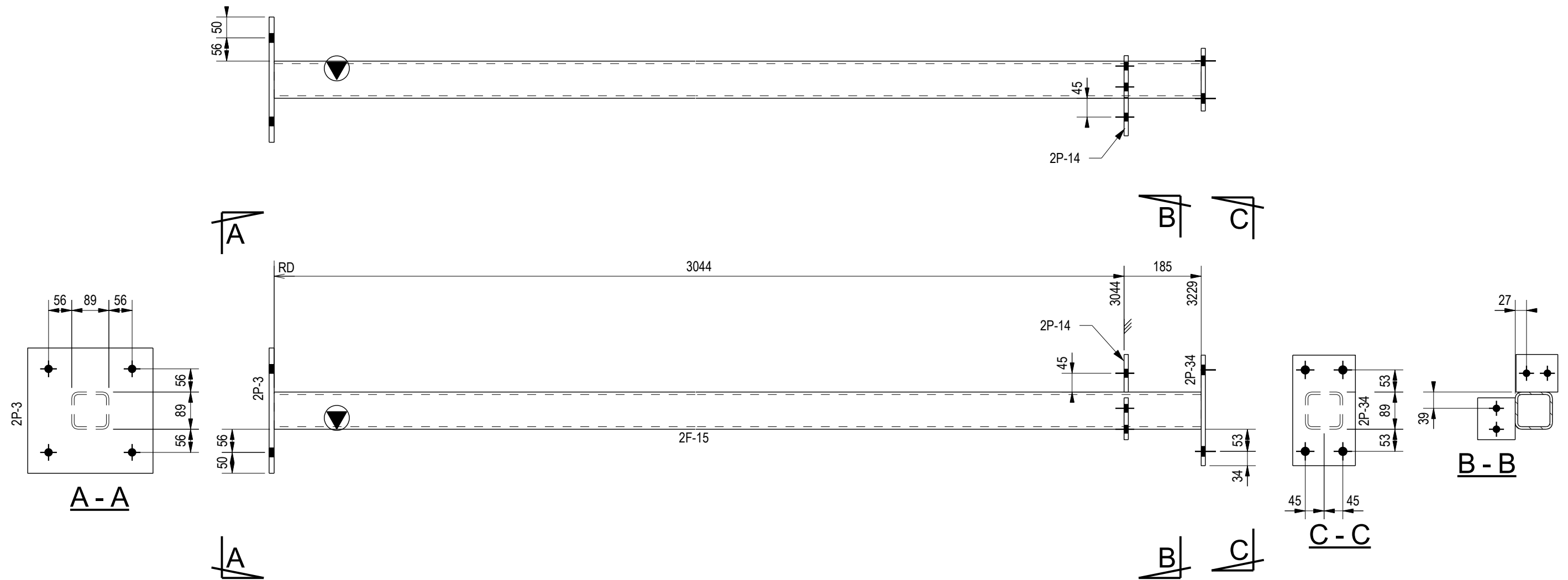
MATERIAL LIST

ITEM	No.OFF	SECTION	LENGTH	GRADE	WEIGHT(kg)	AREA(m ²)
2F-51	3	PFC150*75	3225	300PLUS	170.9	5.6
2F-64	9	EA75*75*6	343	300PLUS	21.0	0.9
2P-1	9	PLATE6*70	140	250	4.2	0.2
2P-24	21	PLATE8*120	152	250	23.8	0.8
TOTAL					219.8	7.6

General Notes:

1. ALL WELDS ARE 6CFW U.N.O.
 2. FINISH - PRIMED U.N.O.
 3. CONTACT NIP DETAILING FOR ANY DISCREPANCIES
 4. DO NOT SCALE DRAWING
 5. CONTRACTOR TO VERIFY ALL LEVELS AND DIM'S PRIOR TO COMMENCEMENT WORK ON SITE OR ANY FABRICATION
- Orientation marks are placed according to the rules:
- ◐ - to the top flange of beams, at the end which points closest to the north or east
 - ◑ - to the lower end of columns, on the flange which points closest to the north or east
 - ◒ - to the flange of bracing, at the end which points closest to the north or east

REV	DATE	DESCRIPTION	
		CLIENT	PROJECT NAME
		PROJECT No	ISSUE DATE
		DRAWN BY	23.07.2014
		Eng. RADU GORAN	DRAWING No
		CHECKED BY	REV
		APPROVED BY	SCALE
3rd angle projection		SD 269	NTS



ASSEMBLY 2C1-1 QTY - 1 OFF

MATERIAL LIST

ITEM	No.OFF	SECTION	LENGTH	GRADE	WEIGHT(kg)	AREA(m ²)
2F-15	1	SHS89*89*6.0	3229	350	47.4	1.1
2P-3	1	FLAT12*300	300	250	8.5	0.2
2P-14	2	FLAT10*90	100	250	1.4	0.0
2P-34	1	FLAT10*150	265	250	3.1	0.1
TOTAL					60.4	1.4

General Notes:

1. ALL WELDS ARE 6CFW U.N.O.
 2. FINISH - PRIMED U.N.O.
 3. CONTACT NIP DETAILING FOR ANY DISCREPANCIES
 4. DO NOT SCALE DRAWING
 5. CONTRACTOR TO VERIFY ALL LEVELS AND DIM'S PRIOR TO COMMENCEMENT WORK ON SITE OR ANY FABRICATION
- Orientation marks are placed according to the rules:
- ▲ - to the top flange of beams, at the end which points closest to the north or east
 - ▼ - to the lower end of columns, on the flange which points closest to the north or east
 - ▲ - to the flange of bracing, at the end which points closest to the north or east

REV	DATE	DESCRIPTION	
		CLIENT	PROJECT NAME
		PROJECT No	ISSUE DATE
		DRAWN BY	REV
		CHECKED BY	SCALE
		APPROVED BY	SD 275
			NTS



P: (0040) 742 770 705
www.nip-detailing.com



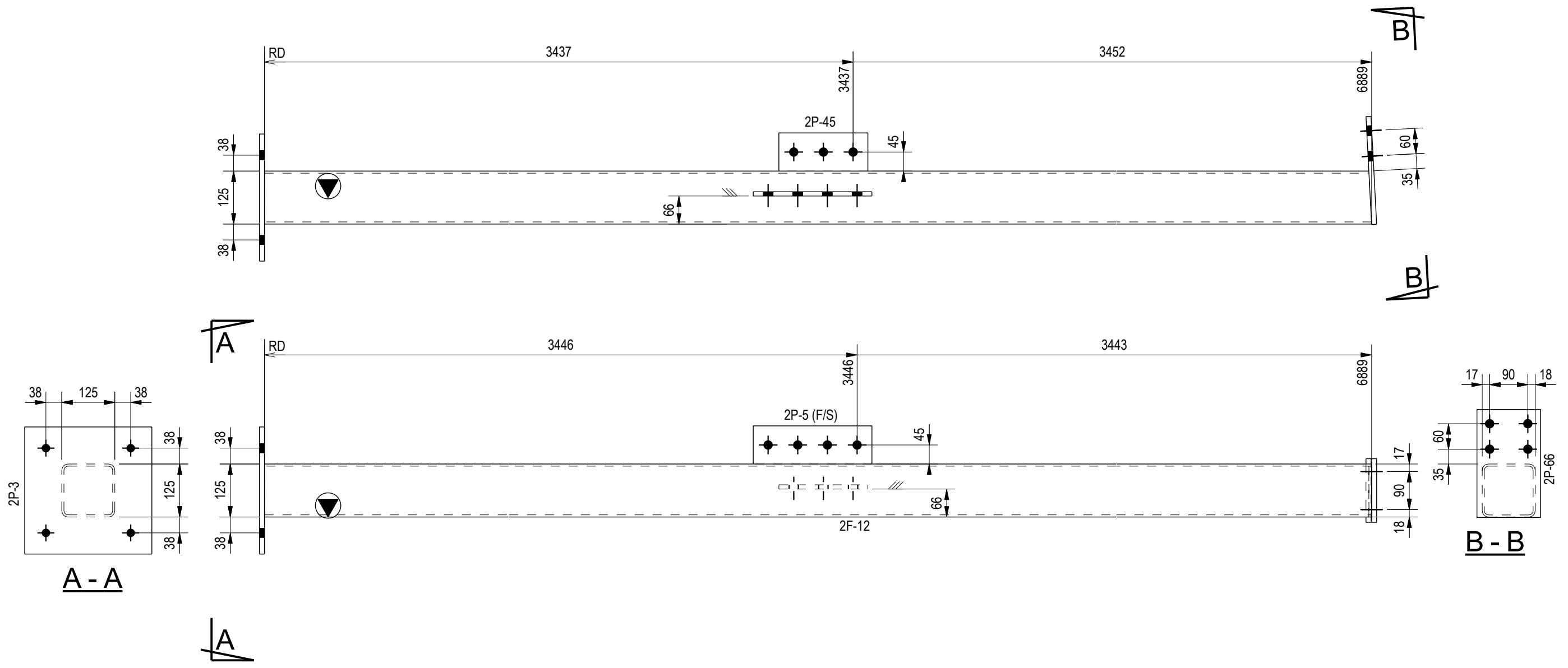
Eng. RADU GORAN

3rd angle projection

23.07.2014

SD 275

NTS



ASSEMBLY 2C3-1 QTY - 1 OFF

MATERIAL LIST

ITEM	No.OFF	SECTION	LENGTH	GRADE	WEIGHT(kg)	AREA(m ²)
2F-12	1	SHS125*125*5.0	6889	350	124.9	3.3
2P-3	1	FLAT12*300	300	250	8.5	0.2
2P-5	1	FLAT10*90	280	250	2.0	0.1
2P-45	1	FLAT10*90	210	250	1.5	0.0
2P-66	1	FLAT12*150	255	250	3.6	0.1
TOTAL					140.5	3.7

General Notes:

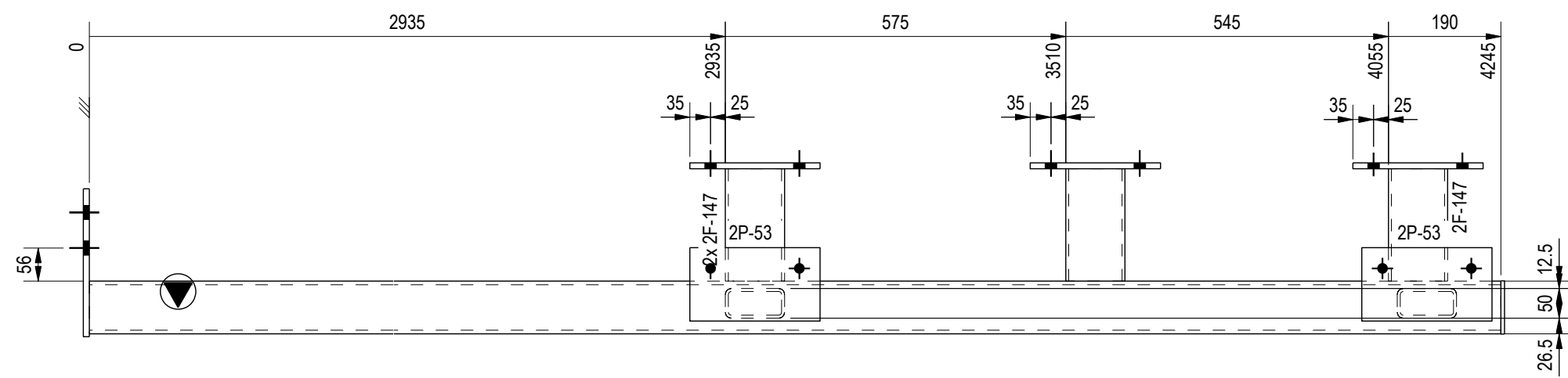
1. ALL WELDS ARE 6CFW U.N.O.
 2. FINISH - PRIMED U.N.O.
 3. CONTACT NIP DETAILING FOR ANY DISCREPANCIES
 4. DO NOT SCALE DRAWING
 5. CONTRACTOR TO VERIFY ALL LEVELS AND DIM'S PRIOR TO COMMENCEMENT WORK ON SITE OR ANY FABRICATION
- Orientation marks are placed according to the rules:
- ◐ - to the top flange of beams, at the end which points closest to the north or east
 - ◑ - to the lower end of columns, on the flange which points closest to the north or east
 - ◒ - to the flange of bracing, at the end which points closest to the north or east

REV	DATE	DESCRIPTION			
		CLIENT		PROJECT NAME	
		PROJECT No		ISSUE DATE	23.07.2014
		DRAWN BY	Eng. RADU GORAN	DRAWING No	REV SCALE
		CHECKED BY		SD 279	NTS
		APPROVED BY			

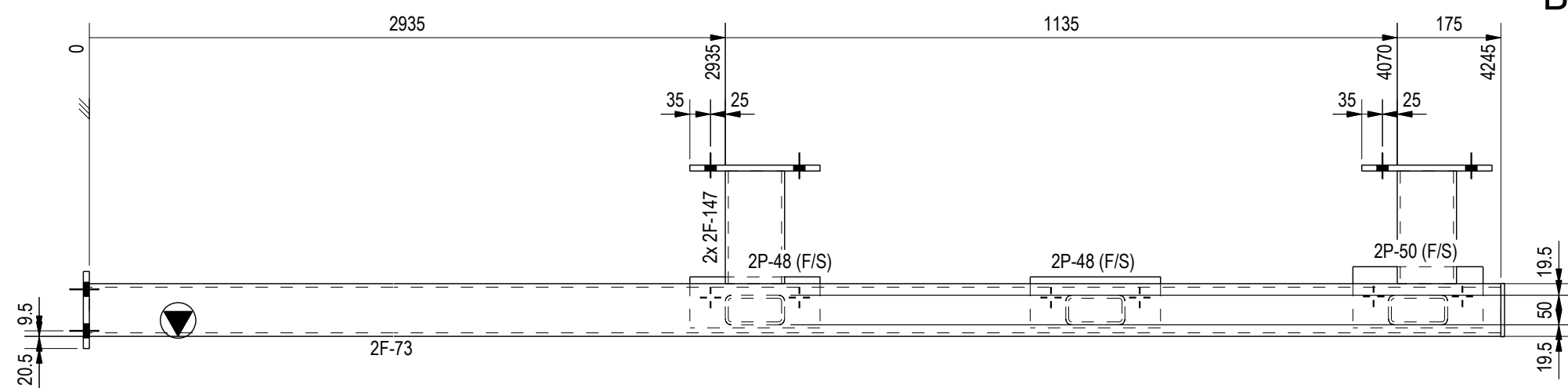


P: (0040) 742 770 705
www.nip-detailing.com





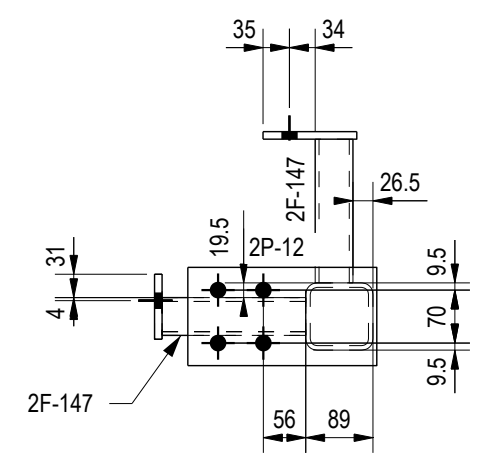
A



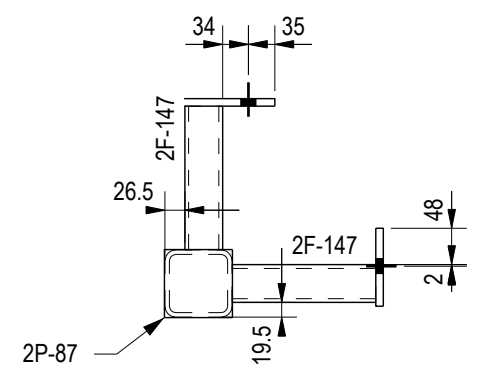
A

B

B



A - A



B - B

MATERIAL LIST

ITEM	No.OFF	SECTION	LENGTH	GRADE	WEIGHT(kg)	AREA(m ²)
2F-73	1	SHS89*89*6.0	4245	350	62.3	1.4
2F-147	5	RHS100*50*5	190	350	10.4	0.3
2P-12	1	FLAT10*130	250	250	2.6	0.1
2P-48	2	PLATE10*86	220	250	3.0	0.1
2P-50	1	PLATE10*103	220	250	1.8	0.1
2P-53	2	PLATE10*124	220	250	4.3	0.1
2P-87	1	FLAT6*90	90	250	0.4	0.0
TOTAL					84.7	2.0

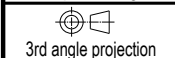
**ASSEMBLY 2C10-3
QTY - 1 OFF**

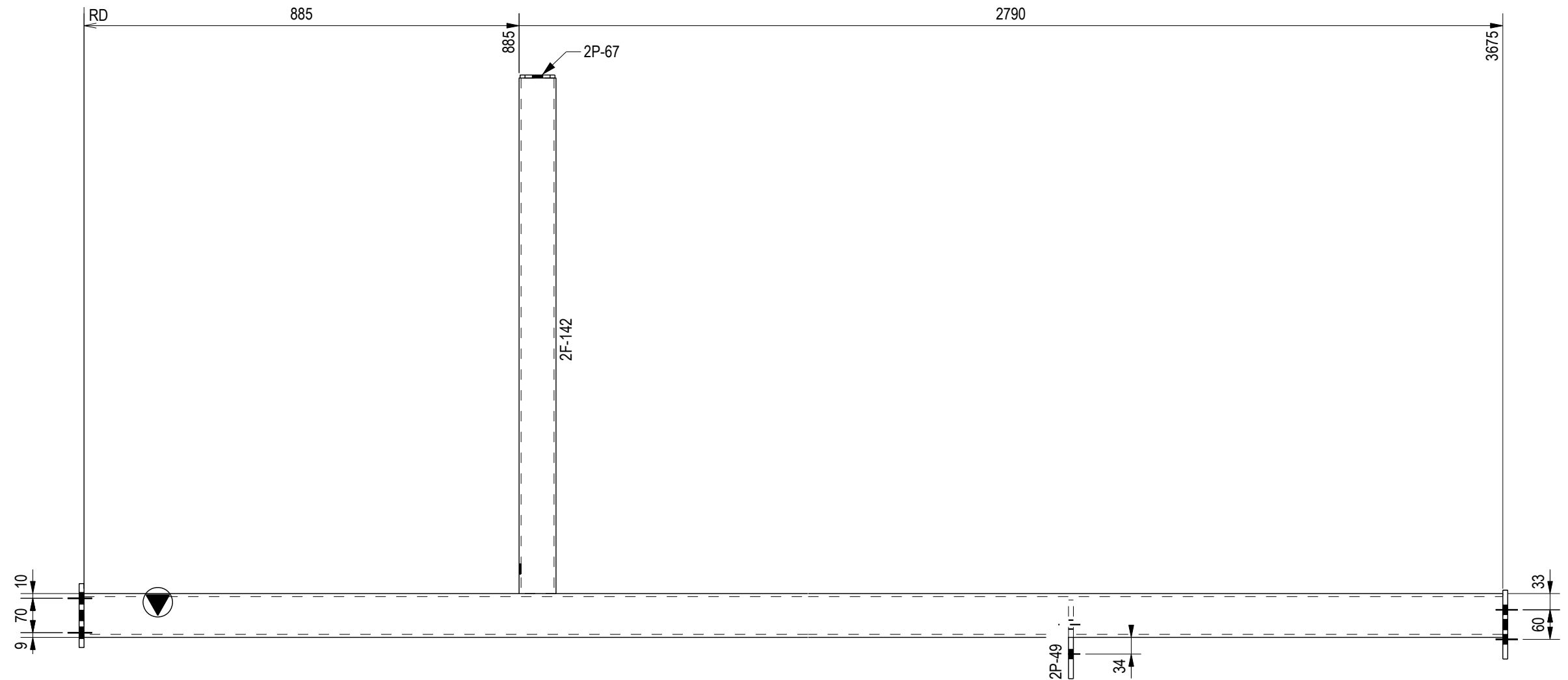
General Notes:
 1. ALL WELDS ARE 6CFW U.N.O.
 2. FINISH - PRIMED U.N.O.
 3. CONTACT NIP DETAILING FOR ANY DISCREPANCIES
 4. DO NOT SCALE DRAWING
 5. CONTRACTOR TO VERIFY ALL LEVELS AND DIM'S PRIOR TO COMMENCEMENT WORK ON SITE OR ANY FABRICATION
 Orientation marks are placed according to the rules:
 - to the top flange of beams, at the end which points closest to the north or east
 - to the lower end of columns, on the flange which points closest to the north or east
 - to the flange of bracing, at the end which points closest to the north or east

REV	DATE	DESCRIPTION	PROJECT NAME		
		CLIENT			
		PROJECT No	ISSUE DATE	18.07.2014	
		DRAWN BY	Eng. RADU GORAN	DRAWING No	REV
		CHECKED BY		SD 286	SCALE
		APPROVED BY			NTS



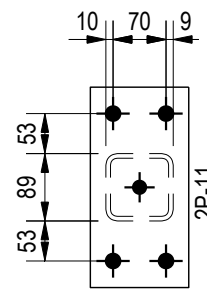
P: (0040) 742 770 705
www.nip-detailing.com



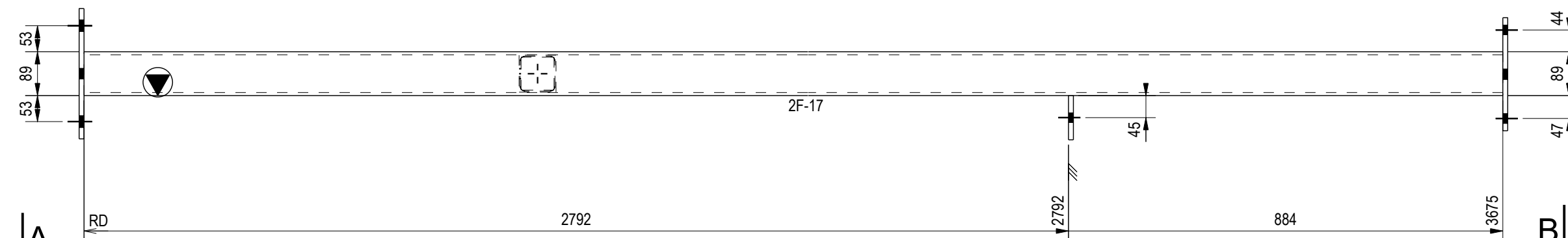


A

B

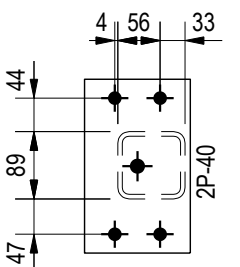


A - A



A

B



B - B

ASSEMBLY 2C11-1 Finish - GALVANIZED QTY - 1 OFF

MATERIAL LIST

ITEM	No.OFF	SECTION	LENGTH	GRADE	WEIGHT(kg)	AREA(m ²)
2F-17	1	SHS89*89*6.0	3675	350	53.9	1.2
2F-142	1	SHS75*75*4.0	1049	350	8.9	0.3
2P-11	1	FLAT10*130	265	250	2.7	0.1
2P-40	1	PLATE10*140	230	250	2.5	0.1
2P-49	1	FLAT10*90	160	250	1.1	0.0
2P-67	1	PLATE6*71	71	250	0.2	0.0
TOTAL					69.4	1.7

General Notes:

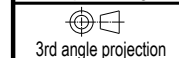
- ALL WELDS ARE 6CFW U.N.O.
 - FINISH - PRIMED U.N.O.
 - CONTACT NIP DETAILING FOR ANY DISCREPANCIES
 - DO NOT SCALE DRAWING
 - CONTRACTOR TO VERIFY ALL LEVELS AND DIM'S PRIOR TO COMMENCEMENT WORK ON SITE OR ANY FABRICATION
- Orientation marks are placed according to the rules:
- to the top flange of beams, at the end which points closest to the north or east
 - to the lower end of columns, on the flange which points closest to the north or east
 - to the flange of bracing, at the end which points closest to the north or east

REV	DATE	DESCRIPTION			
		CLIENT		PROJECT NAME	
		PROJECT No		ISSUE DATE	23.07.2014
		DRAWN BY	Eng. RADU GORAN	DRAWING No	REV
		CHECKED BY		SD 289	SCALE
		APPROVED BY			NTS

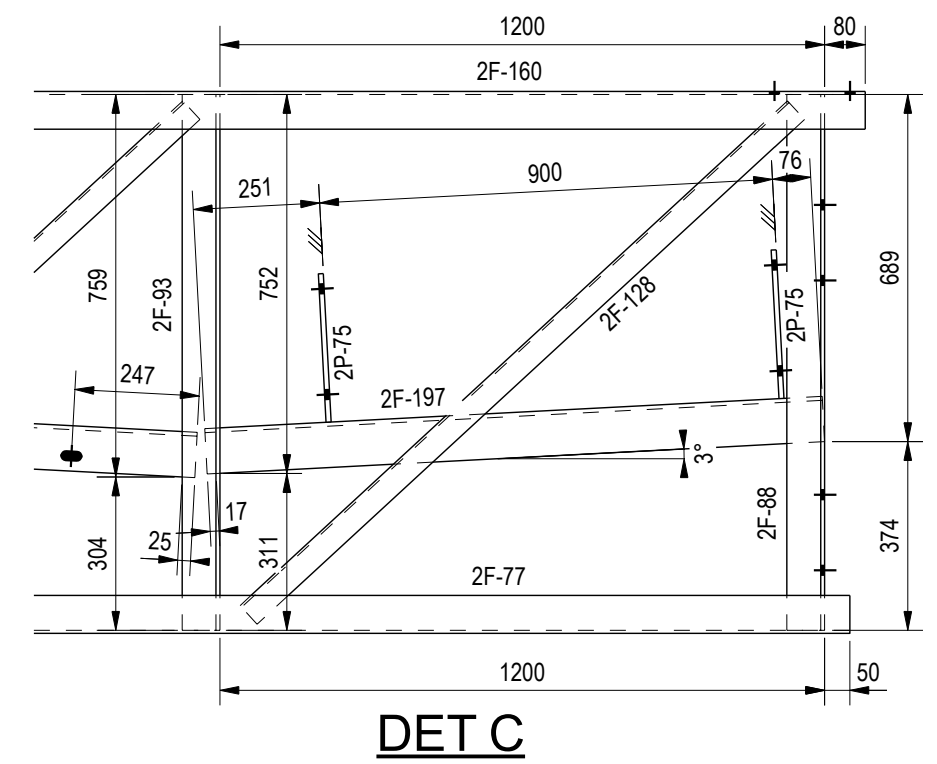
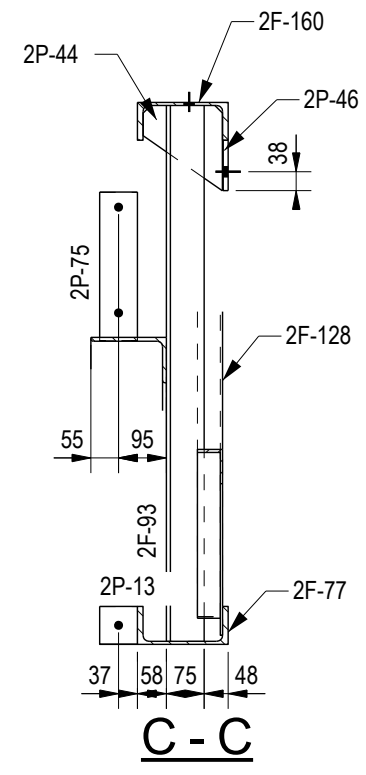
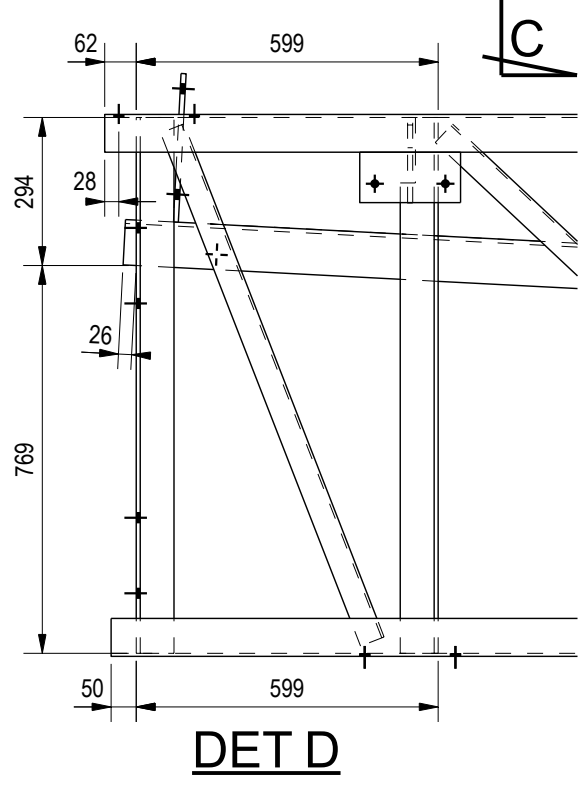
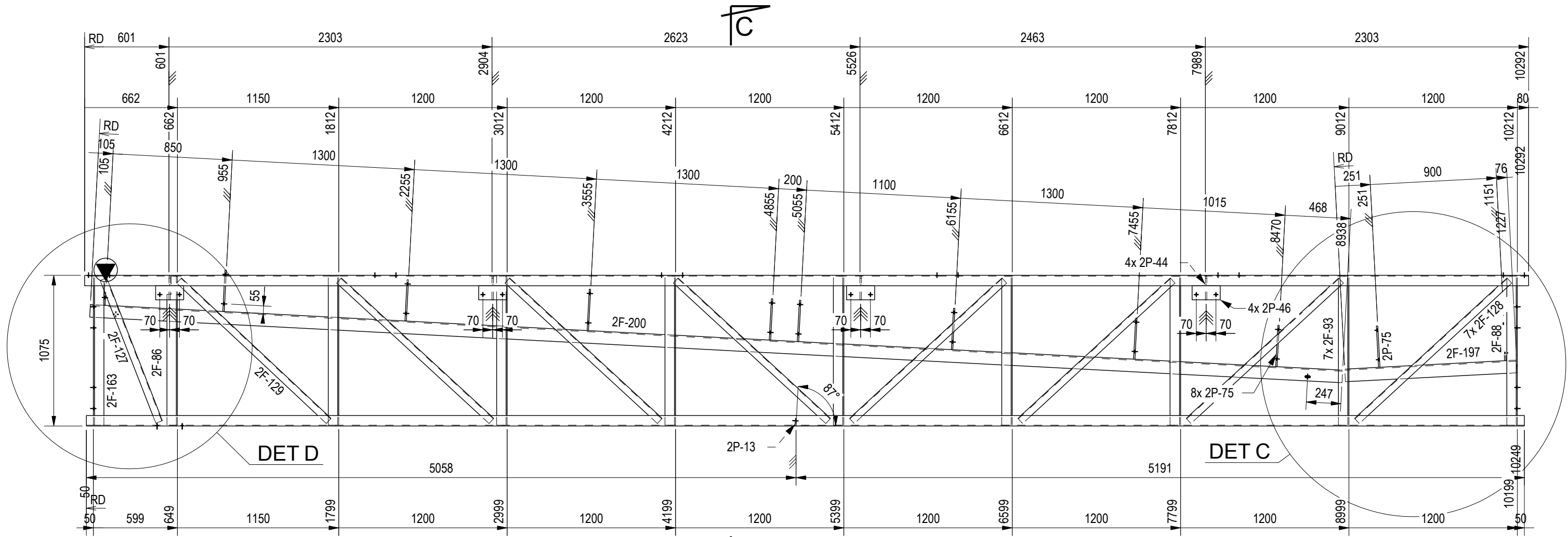


P: (0040) 742 770 705

www.nip-detailing.com



3rd angle projection

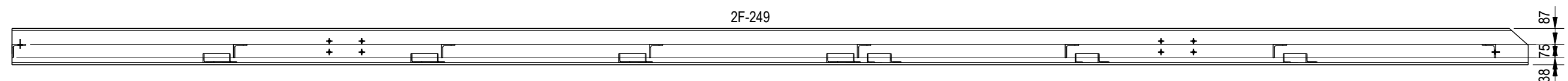
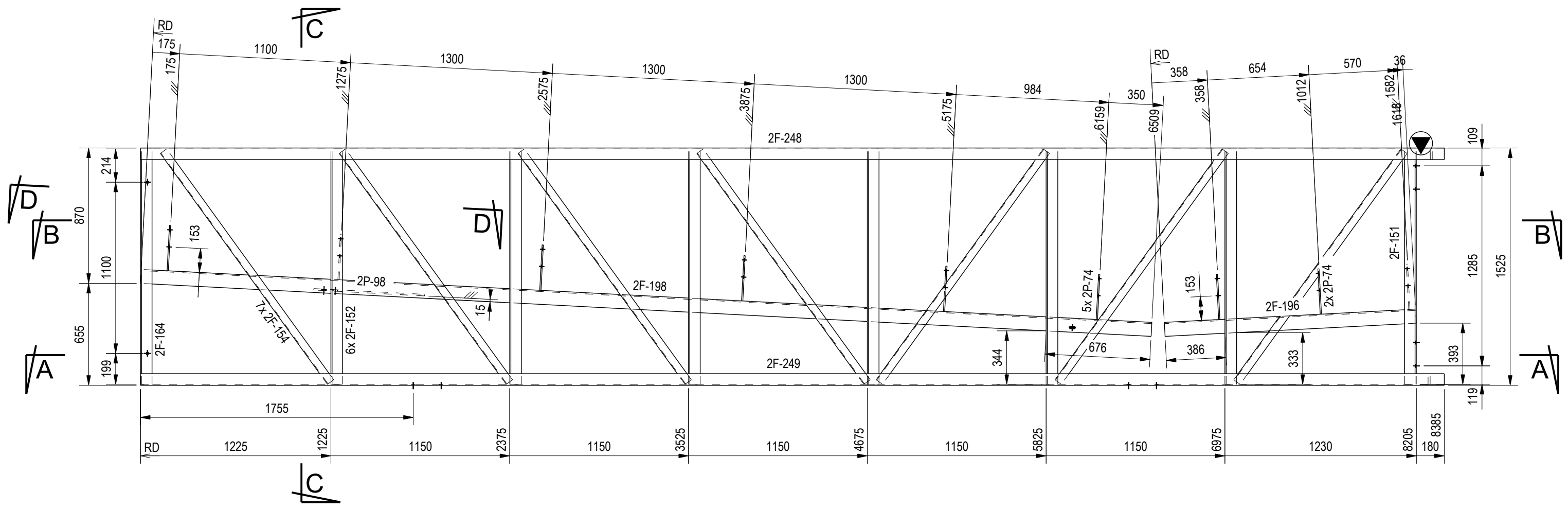


**ASSEMBLY 2F1-2
QTY - 1 OFF**

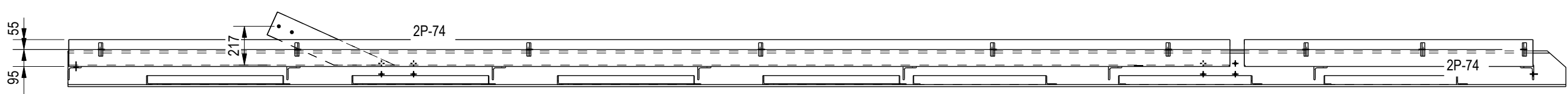
MATERIAL LIST						
ITEM	No.OFF	SECTION	LENGTH	GRADE	WEIGHT(kg)	AREA(m ²)
2F-77	1	PFC180*75	10249	300PLUS	214.0	6.6
2F-86	1	EA75*75*8	1063	300PLUS	9.3	0.3
2F-88	1	EA75*75*8	1063	300PLUS	9.3	0.3
2F-93	7	EA75*75*8	1063	300PLUS	64.8	2.2
2F-127	1	EA50*50*5	1093	300PLUS	3.8	0.2
2F-128	7	EA50*50*5	1477	300PLUS	36.0	2.1
2F-129	1	EA50*50*5	1463	300PLUS	5.1	0.3
2F-160	1	PFC180*75	10292	300PLUS	214.9	6.6
2F-163	1	EA75*75*8	1063	300PLUS	9.3	0.3
2F-197	1	UA150*90*8	1227	300PLUS	17.5	0.6
2F-200	1	UA150*90*8	8938	300PLUS	127.7	4.2
2P-13	1	FLAT8*75	75	250	0.4	0.0
2P-44	4	PLATE10*157	169	250	5.6	0.2
2P-46	4	FLAT10*100	200	250	6.3	0.2
2P-75	11	FLAT10*75	295	250	19.1	0.6
TOTAL					742.9	24.5

General Notes:
 1. ALL WELDS ARE 6CFW U.N.O.
 2. FINISH - PRIMED U.N.O.
 3. CONTACT NIP DETAILING FOR ANY DISCREPANCIES
 4. DO NOT SCALE DRAWING
 5. CONTRACTOR TO VERIFY ALL LEVELS AND DIM'S PRIOR TO COMMENCEMENT WORK ON SITE OR ANY FABRICATION
 Orientation marks are placed according to the rules:
 - to the top flange of beams, at the end which points closest to the north or east
 - to the lower end of columns, on the flange which points closest to the north or east
 - to the flange of bracing, at the end which points closest to the north or east

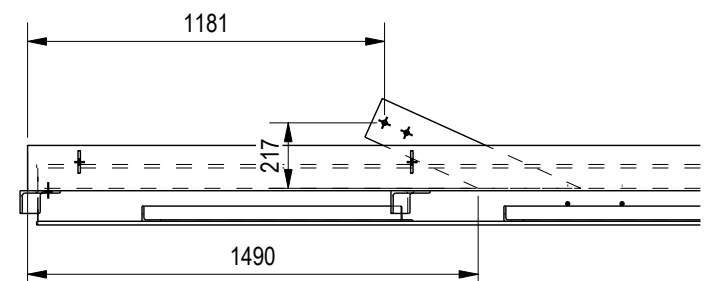
REV	DATE	DESCRIPTION	PROJECT NAME	
		CLIENT		
		PROJECT No	ISSUE DATE	23.07.2014
		DRAWN BY	Eng. RADU GORAN	DRAWING No
		CHECKED BY		REV
		APPROVED BY		SCALE
			SD 294	NTS



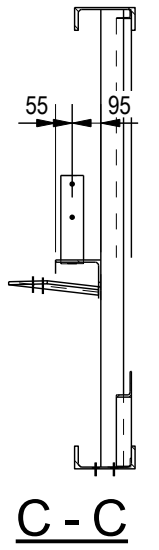
A - A



B - B



D - D



C - C

MATERIAL LIST

ITEM	No.OFF	SECTION	LENGTH	GRADE	WEIGHT(kg)	AREA(m ²)
2F-151	1	EA75*75*8	1513	300PLUS	13.2	0.4
2F-152	6	EA75*75*8	1513	300PLUS	79.1	2.6
2F-154	7	EA50*50*5	1831	300PLUS	44.6	2.6
2F-164	1	EA75*75*8	1513	300PLUS	13.2	0.4
2F-196	1	UA150*90*8	1618	300PLUS	23.1	0.8
2F-198	1	UA150*90*8	6509	300PLUS	93.0	3.1
2F-248	1	PFC200*75	8385	300PLUS	192.2	5.7
2F-249	1	PFC200*75	8385	300PLUS	192.2	5.7
2P-74	9	FLAT8*75	292	250	12.4	0.4
2P-98	1	PLATE10*140	721	250	6.2	0.2
TOTAL					669.2	21.9

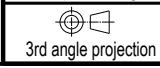
ASSEMBLY 2F13-2
QTY - 1 OFF

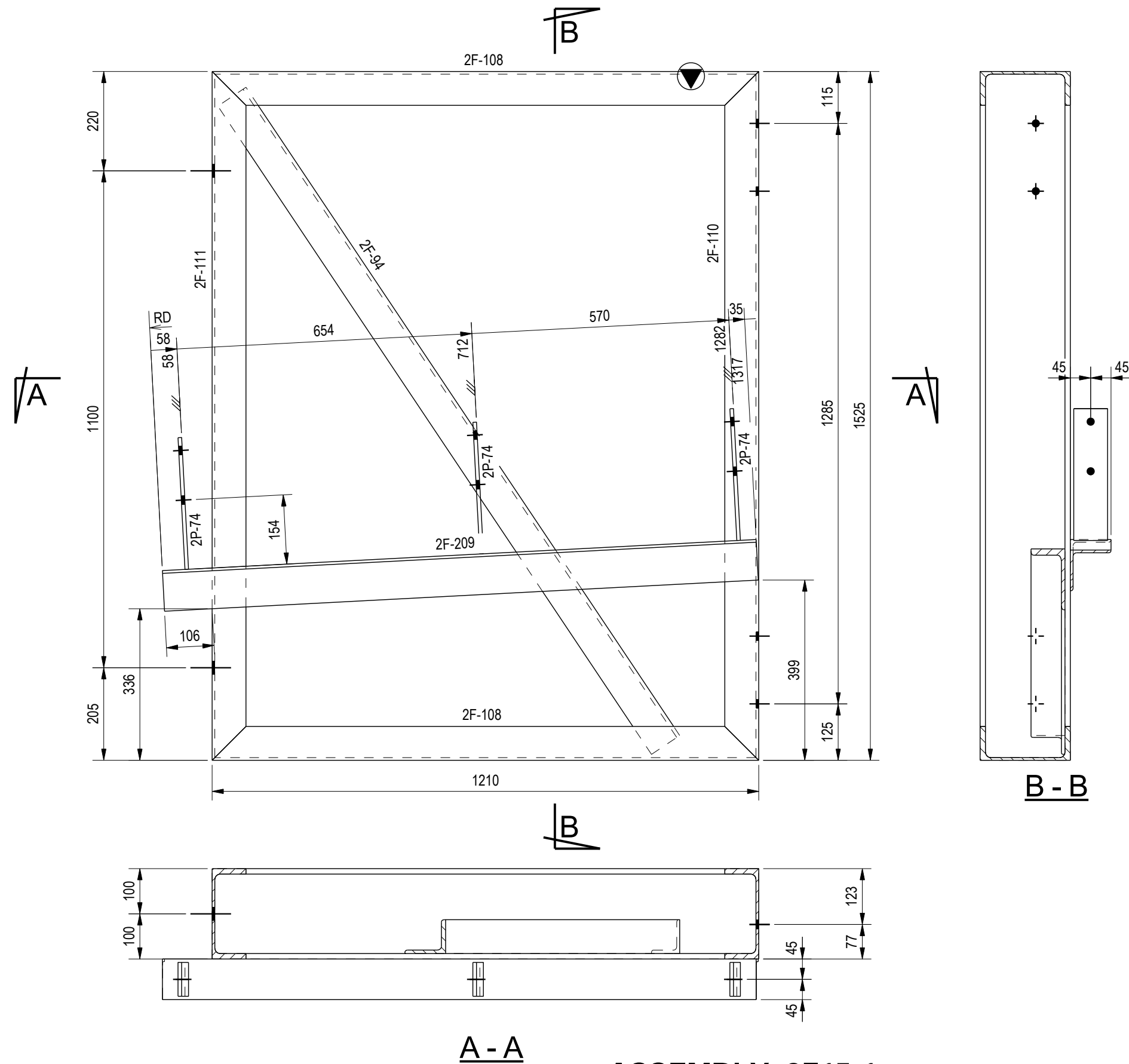
General Notes:
 1. ALL WELDS ARE 6CFW U.N.O.
 2. FINISH - PRIMED U.N.O.
 3. CONTACT NIP DETAILING FOR ANY DISCREPANCIES
 4. DO NOT SCALE DRAWING
 5. CONTRACTOR TO VERIFY ALL LEVELS AND DIM'S PRIOR TO COMMENCEMENT WORK ON SITE OR ANY FABRICATION
 Orientation marks are placed according to the rules:
 - to the top flange of beams, at the end which points closest to the north or east
 - to the lower end of columns, on the flange which points closest to the north or east
 - to the flange of bracing, at the end which points closest to the north or east

REV	DATE	DESCRIPTION	PROJECT NAME	
		CLIENT		
		PROJECT No	ISSUE DATE	23.07.2014
		DRAWN BY	Eng. RADU GORAN	DRAWING No
		CHECKED BY		REV
		APPROVED BY		SCALE
			SD 298	NTS



P: (0040) 742 770 705
www.nip-detailing.com





A - A

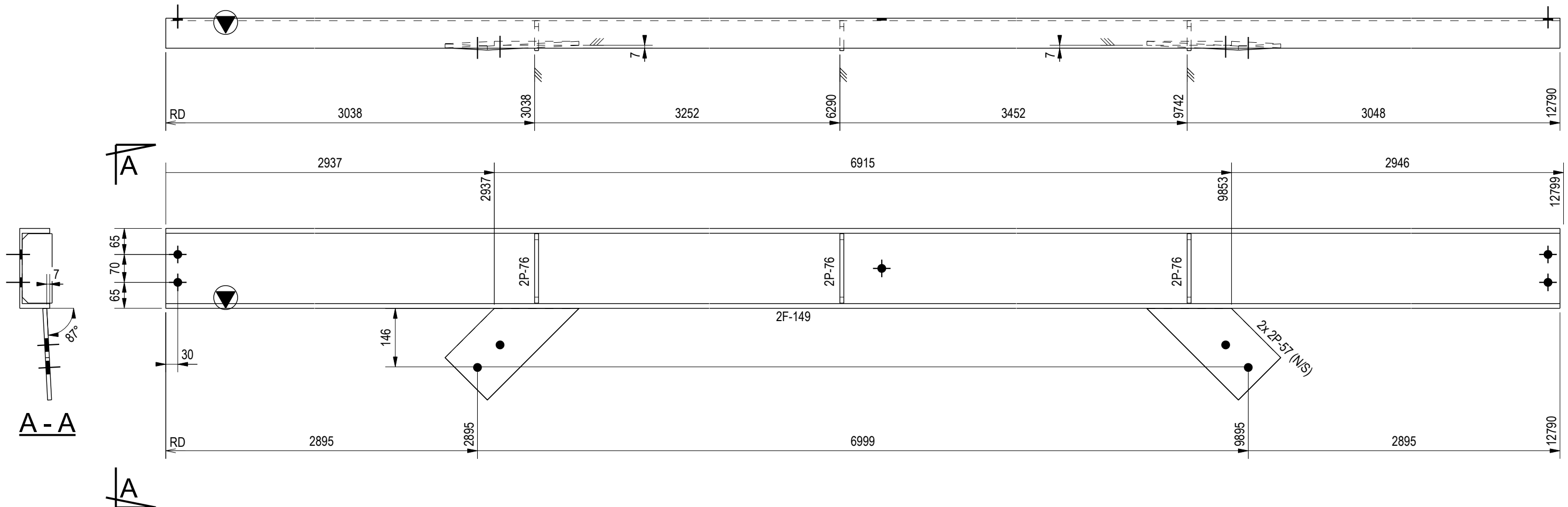
**ASSEMBLY 2F15-1
QTY - 4 OFF**

MATERIAL LIST						
ITEM	No.OFF	SECTION	LENGTH	GRADE	WEIGHT(kg)	AREA(m ²)
2F-94	4	EA75*75*8	1727	300PLUS	60.2	2.0
2F-108	8	PFC200*75	1210	300PLUS	222.0	6.6
2F-110	4	PFC200*75	1525	300PLUS	139.8	4.1
2F-111	4	PFC200*75	1525	300PLUS	139.8	4.1
2F-209	4	EA90*90*6	1317	300PLUS	43.4	1.8
2P-74	12	FLAT8*75	292	250	16.5	0.6
TOTAL					621.7	19.3

General Notes:
 1. ALL WELDS ARE 6CFW U.N.O.
 2. FINISH - PRIMED U.N.O.
 3. CONTACT NIP DETAILING FOR ANY DISCREPANCIES
 4. DO NOT SCALE DRAWING
 5. CONTRACTOR TO VERIFY ALL LEVELS AND DIMS PRIOR TO COMMENCEMENT WORK ON SITE OR ANY FABRICATION
 Orientation marks are placed according to the rules:
 - to the top flange of beams, at the end which points closest to the north or east
 - to the lower end of columns, on the flange which points closest to the north or east
 - to the flange of bracing, at the end which points closest to the north or east

REV	DATE	DESCRIPTION			
		CLIENT		PROJECT NAME	
		PROJECT No		ISSUE DATE	18.07.2014
		DRAWN BY	Eng. RADU GORAN	DRAWING No	REV
		CHECKED BY		SCALE	NTS
		APPROVED BY		SD 300	





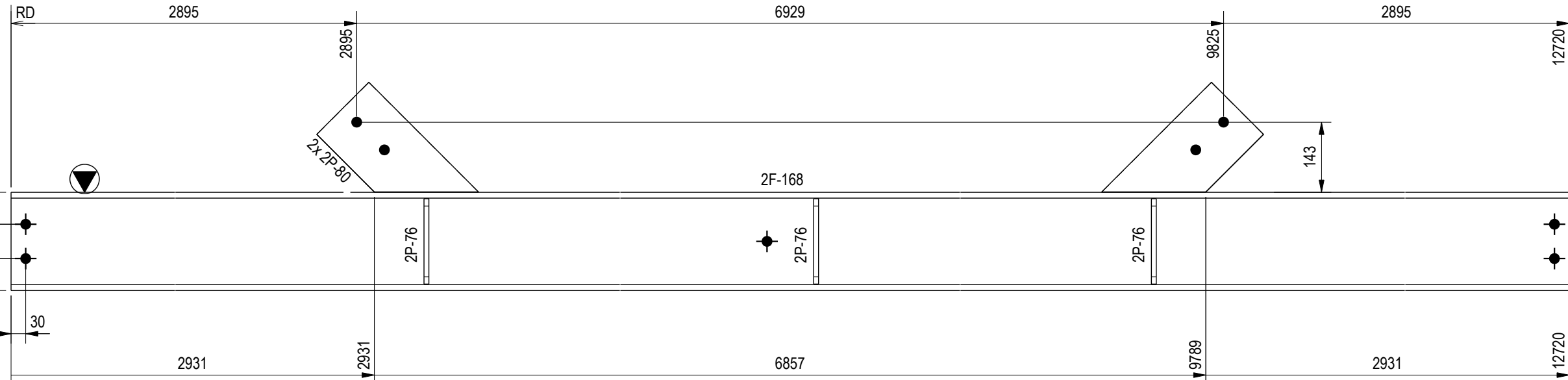
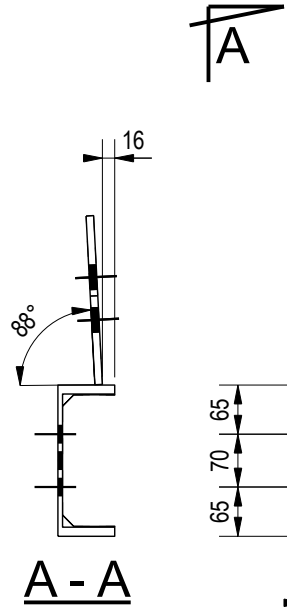
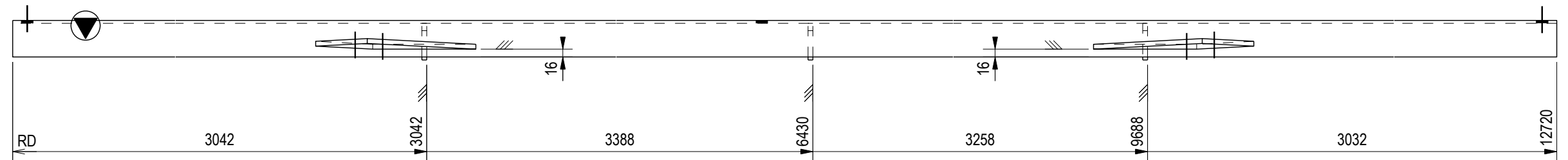
ASSEMBLY 2WT2-3 QTY - 3 OFF

MATERIAL LIST						
ITEM	No.OFF	SECTION	LENGTH	GRADE	WEIGHT(kg)	AREA(m ²)
2F-149	3	PFC200*75	12790	300PLUS	879.5	26.1
2P-57	6	FLAT10*150	324	250	17.6	0.5
2P-76	9	FLAT10*75	174	250	9.1	0.3
TOTAL					906.2	26.9

General Notes:

- ALL WELDS ARE 6CFW U.N.O.
 - FINISH - PRIMED U.N.O.
 - CONTACT NIP DETAILING FOR ANY DISCREPANCIES
 - DO NOT SCALE DRAWING
 - CONTRACTOR TO VERIFY ALL LEVELS AND DIM'S PRIOR TO COMMENCEMENT WORK ON SITE OR ANY FABRICATION
- Orientation marks are placed according to the rules:
- to the top flange of beams, at the end which points closest to the north or east
 - to the lower end of columns, on the flange which points closest to the north or east
 - to the flange of bracing, at the end which points closest to the north or east

REV	DATE	DESCRIPTION			
		CLIENT		PROJECT NAME	
P: (0040) 742 770 705		PROJECT No	ISSUE DATE		18.07.2014
www.nip-detailing.com		DRAWN BY	Eng. RADU GORAN	DRAWING No	REV SCALE
3rd angle projection		CHECKED BY	APPROVED BY		SD 304
					NTS



ASSEMBLY 2WT2-12 QTY - 1 OFF

MATERIAL LIST						
ITEM	No.OFF	SECTION	LENGTH	GRADE	WEIGHT(kg)	AREA(m ²)
2F-168	1	PFC200*75	12720	300PLUS	291.6	8.6
2P-76	3	FLAT10*75	174	250	3.0	0.1
2P-80	2	FLAT10*150	316	250	5.7	0.2
TOTAL					300.3	8.9

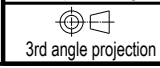
General Notes:
 1. ALL WELDS ARE 6CFW U.N.O.
 2. FINISH - PRIMED U.N.O.
 3. CONTACT NIP DETAILING FOR ANY DISCREPANCIES
 4. DO NOT SCALE DRAWING
 5. CONTRACTOR TO VERIFY ALL LEVELS AND DIM'S PRIOR TO COMMENCEMENT WORK ON SITE OR ANY FABRICATION

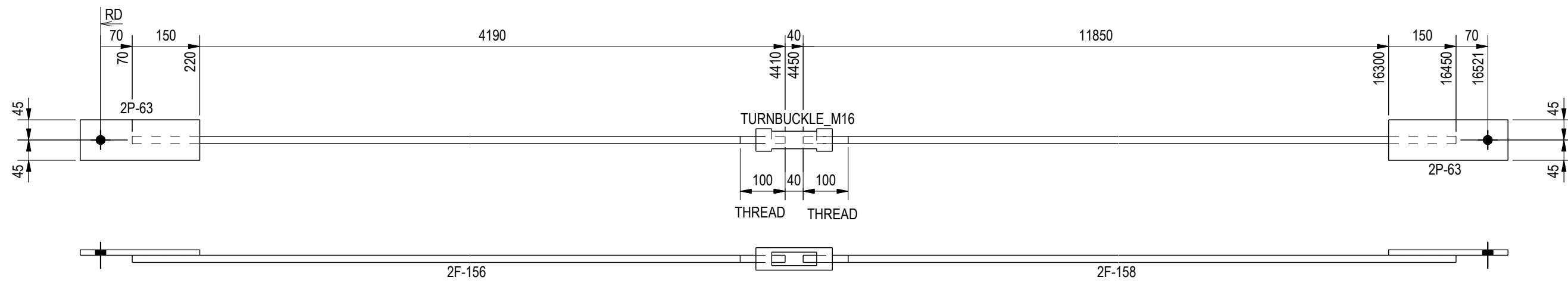
Orientation marks are placed according to the rules:
 - to the top flange of beams, at the end which points closest to the north or east
 - to the lower end of columns, on the flange which points closest to the north or east
 - to the flange of bracing, at the end which points closest to the north or east

REV	DATE	DESCRIPTION			
		CLIENT		PROJECT NAME	
		PROJECT No		ISSUE DATE	23.07.2014
		DRAWN BY	Eng. RADU GORAN	DRAWING No	REV SCALE
		CHECKED BY		SD 312	NTS
		APPROVED BY			



P: (0040) 742 770 705
www.nip-detailing.com





ASSEMBLY 2B1-12 QTY - 1 OFF

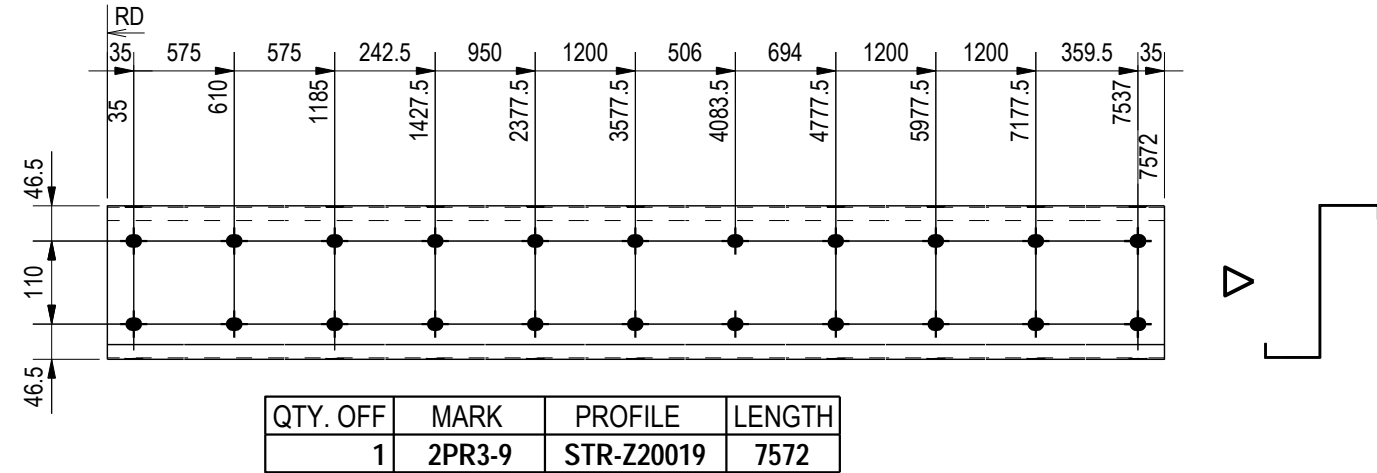
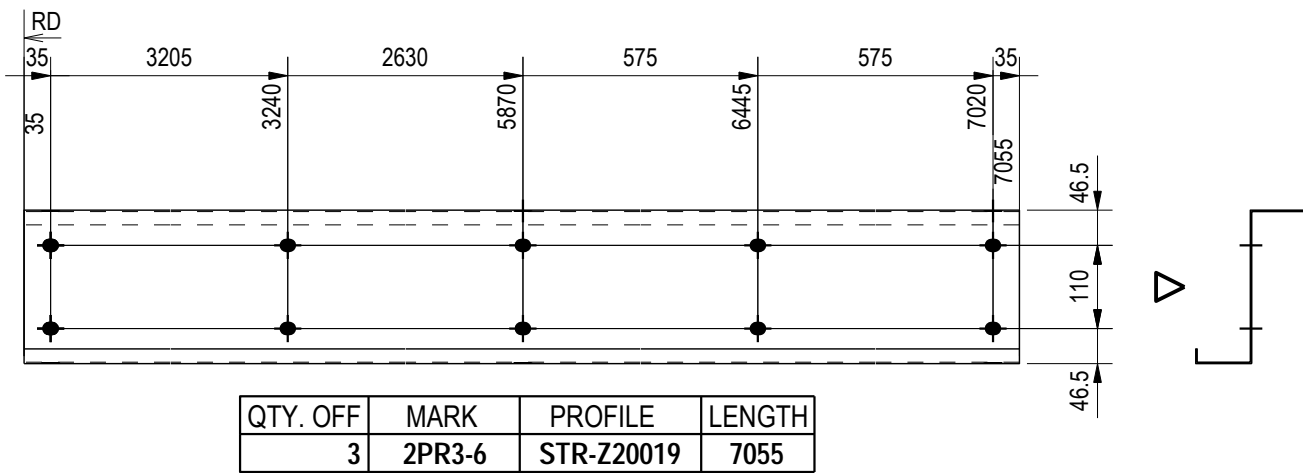
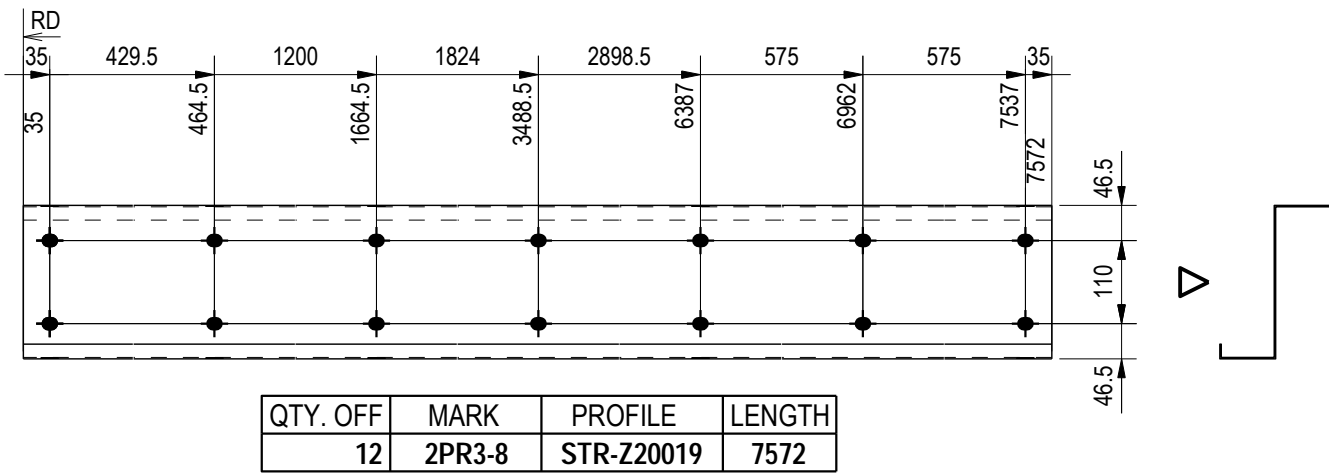
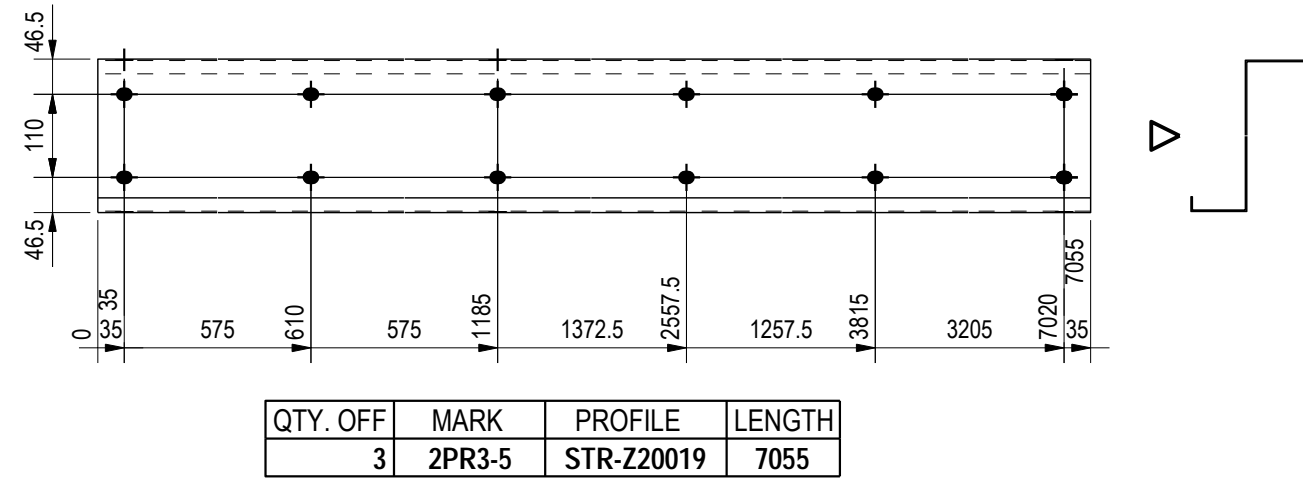
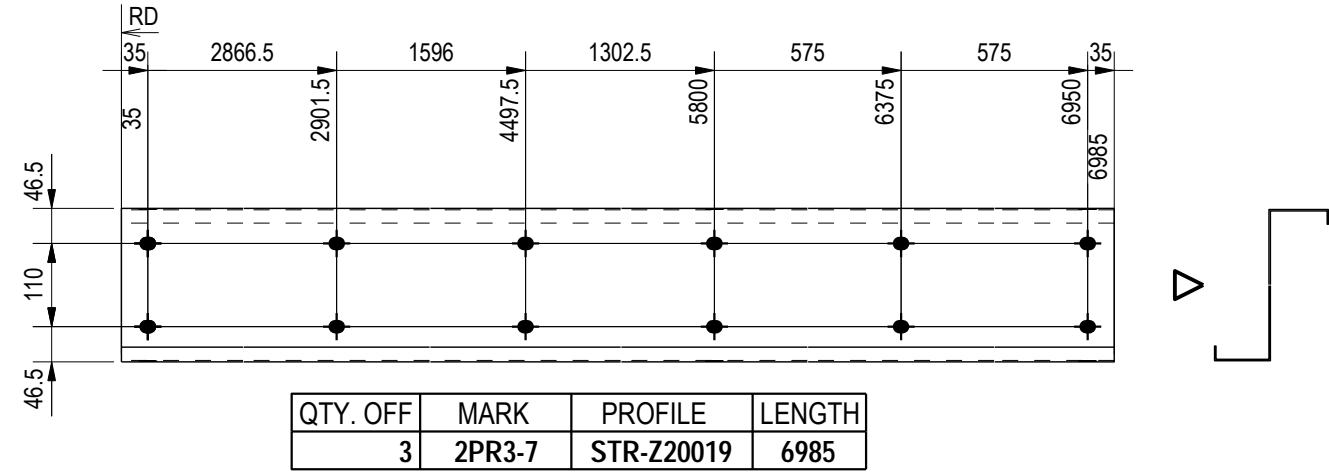
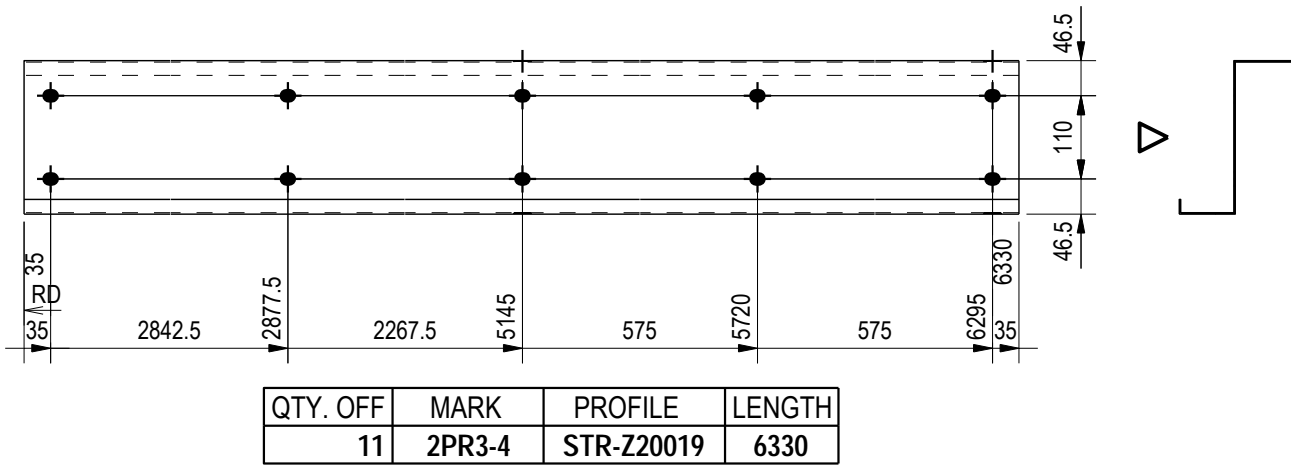
MATERIAL LIST

ITEM	No.OFF	SECTION	LENGTH	GRADE	WEIGHT(kg)	AREA(m ²)
2F-156	1	ROD16	4340	350	6.2	0.2
2F-158	1	ROD16	12000	350	17.1	0.6
2P-63	2	FLAT12*90	265	250	4.5	0.1
80	1	PD50*17	170	300	1.4	0.0
TOTAL					29.1	0.9

General Notes:

1. ALL WELDS ARE 6CFW U.N.O.
 2. FINISH - PRIMED U.N.O.
 3. CONTACT NIP DETAILING FOR ANY DISCREPANCIES
 4. DO NOT SCALE DRAWING
 5. CONTRACTOR TO VERIFY ALL LEVELS AND DIM'S PRIOR TO COMMENCEMENT WORK ON SITE OR ANY FABRICATION
- Orientation marks are placed according to the rules:
- ⊙ - to the top flange of beams, at the end which points closest to the north or east
 - ⊙ - to the lower end of columns, on the flange which points closest to the north or east
 - ⊙ - to the flange of bracing, at the end which points closest to the north or east

REV	DATE	DESCRIPTION			
		CLIENT		PROJECT NAME	
P: (0040) 742 770 705		PROJECT No		ISSUE DATE	18.07.2014
www.nip-detailing.com		DRAWN BY	Eng. RADU GORAN	DRAWING No	REV SCALE
		CHECKED BY		SD 354	NTS
		APPROVED BY			



Note:
ALL SLOTS ARE Ø18x22 LONG SLOTS U.N.O.

REV	DATE	DESCRIPTION			
		CLIENT	PROJECT NAME		
P: (0040) 742 770 705 www.nip-detailing.com		PROJECT No	ISSUE DATE	23.07.2014	
		DRAWN BY	Eng. RADU GORAN	DRAWING No	REV
		CHECKED BY			SCALE
		APPROVED BY			NTS
			PD 206		